

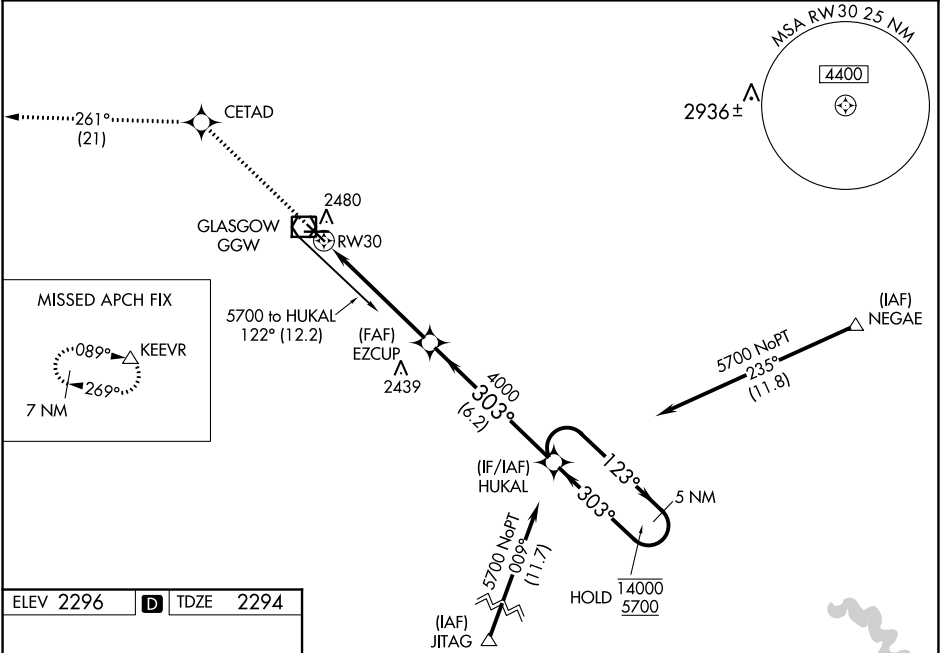
WAAS CH 99620 W30A	APP CRS 303°	Rwy Idg TDZE Apt Elev	5001 2294 2296
--	------------------------	-----------------------------	---

RNAV (GPS) RWY 30

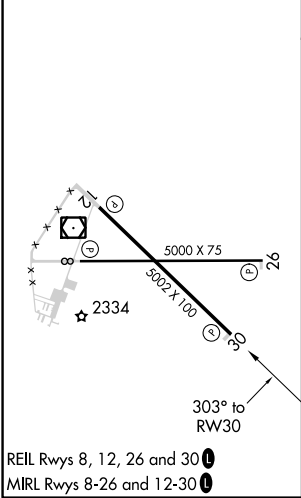
WOKAL FIELD/GLASGOW-VALLEY COUNTY (GGW)

RNP APCH.	For uncompensated Baro-VNAV systems, LNAV-VNAV NA below -14°C or above 54°C. When local altimeter setting not received, use Wolf Point altimeter setting and increase all DA 141 feet and all MDA 160 feet and increase LPV visibility all Cats $\frac{3}{8}$ SM, LNAV/VNAV visibility all Cats $\frac{1}{2}$ SM, LNAV visibility Cats C and D $\frac{1}{2}$ mile, and Circling visibility Cats C and D $\frac{1}{4}$ SM. Baro-VNAV and VDP NA when using Wolf Point altimeter setting.	MISSED APPROACH: Climb to 6500 direct CETAD and on track 261° to KEEVR and hold.
-----------	---	---

ASOS 135.175	SALT LAKE CENTER 126.85 305.2	UNICOM 122.8 (CTAF) 0
------------------------	---	---------------------------------



ELEV 2296	D	TDZE 2294
-----------	---	-----------



6500	CETAD	tr 261°	KEEVR	HUKAL	5 NM Holding Pattern
* LNAV only					
* 1.2 NM to RWY 30					
RWY 30					
1.2 NM 4.1 NM 6.2 NM					
CATEGORY	A	B	C	D	
LPV DA	2494- $\frac{3}{4}$		200 (200- $\frac{3}{4}$)		
LNAV/VNAV DA	2587-1		293 (300-1)		
LNAV MDA	2700-1	406 (500-1)	2700-1 $\frac{1}{8}$	406 (500-1 $\frac{1}{8}$)	
CIRCLING	2780-1	484 (500-1)	2780-1 $\frac{1}{2}$ 484 (500-1 $\frac{1}{2}$)	2860-2 564 (600-2)	