

VOR/DME GGW 113.9 Chan 86	APP CRS 133°	Rwy Idg TDZE 2294 Apt Elev 2296	5001
---	------------------------	---	-------------

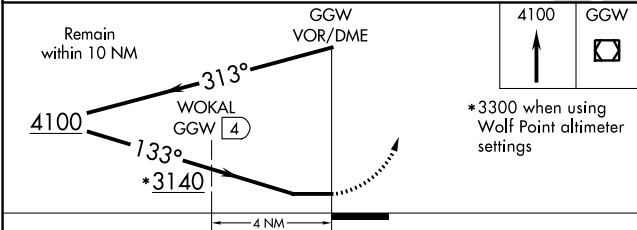
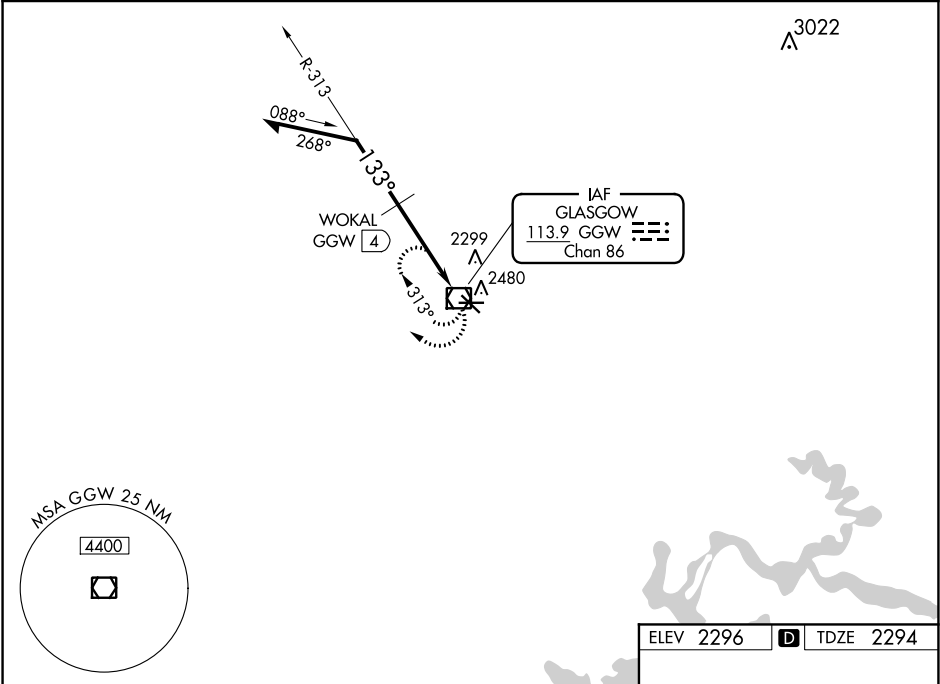
VOR RWY 12

WOKAL FIELD/GLASGOW-VALLEY COUNTY (GGW)

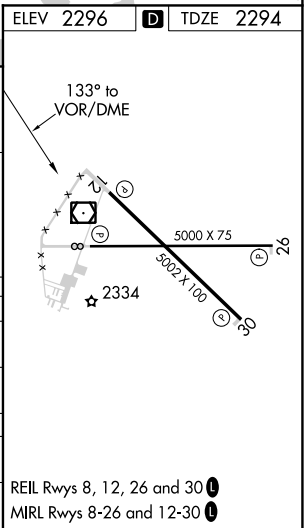
⚠ When local altimeter setting not received, use Wolf Point altimeter setting and increase all MDA 160 feet and increase S-12 and Circling visibility Cats A/B/D ¼ SM, Cat C ½ SM and WOKAL fix mins increase all MDAs 160 feet and increase visibility Cats C/D ½ SM and Circling Cats C/D ½ SM.

MISSED APPROACH:
Climb to 4100 in GGW
VOR/DME holding pattern.

ASOS 135.175	SALT LAKE CENTER 126.85 305.2	UNICOM 122.8 (CTAF) 0
------------------------	---	---------------------------------



CATEGORY	A	B	C	D
S-12	3140-1 846 (900-1)	3140-1¼ 846 (900-1¼)	3140-2½ 846 (900-2½)	3140-2¾ 846 (900-2¾)
CIRCLING	3140-1 844 (900-1)	3140-1¼ 844 (900-1¼)	3140-2½ 844 (900-2½)	3140-2¾ 844 (900-2¾)
WOKAL FIX MINIMUMS				
S-12	2700-1 406 (500-1)	2700-1¼ 406 (500-1¼)		
CIRCLING	2780-1 484 (500-1)	2780-1½ 564 (600-2)		



NW-1, 03 DEC 2020 to 31 DEC 2020

NW-1, 03 DEC 2020 to 31 DEC 2020