

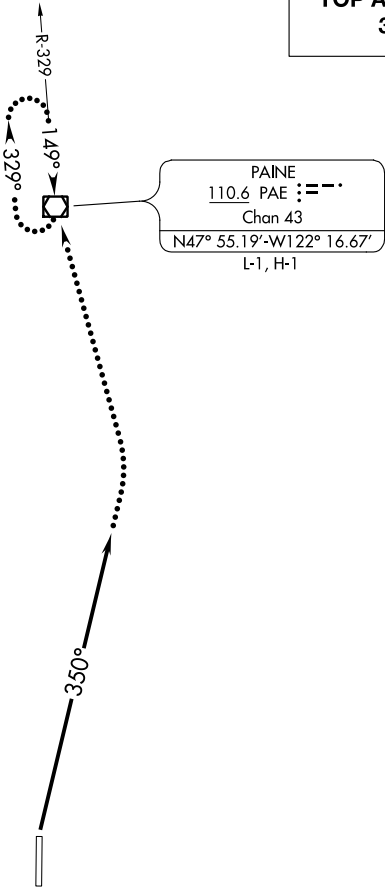
BELLEVUE FOUR DEPARTURE

RENTON MUNI (RNT)  
RENTON, WASHINGTON

AL-5396 (FAA)

ATIS  
126.95  
GND CON  
121.6 256.9  
RENTON TOWER ★  
124.7 256.9  
SEATTLE DEP CON  
119.2 284.7

**TOP ALTITUDE:**  
**3000**



NOTE: RADAR required.

TAKEOFF MINIMUMS

Rwy 16: NA- ATC.  
Rwy 34: Standard with minimum climb of 330' per NM to 2700.

NOTE: Chart not to scale.



DEPARTURE ROUTE DESCRIPTION

**TAKEOFF RUNWAY 34:** Climb heading 350°, maintain 3000, for RADAR vectors, expect filed altitude within 5 minutes after departure.

**LOST COMMUNICATIONS:** If no contact with Seattle Departure Control within 3 minutes after departure, climbing left turn direct PAE VOR/DME, continue climb-in PAE VOR/DME holding pattern to cross PAE VOR/DME at or above MEA/MCA for direction of flight.