

WAAS CH <b>93610</b> <b>W16A</b>	APP CRS <b>157°</b>	Rwy Idg <b>4742</b> TDZE <b>26</b> Apt Elev <b>32</b>
--	------------------------	---

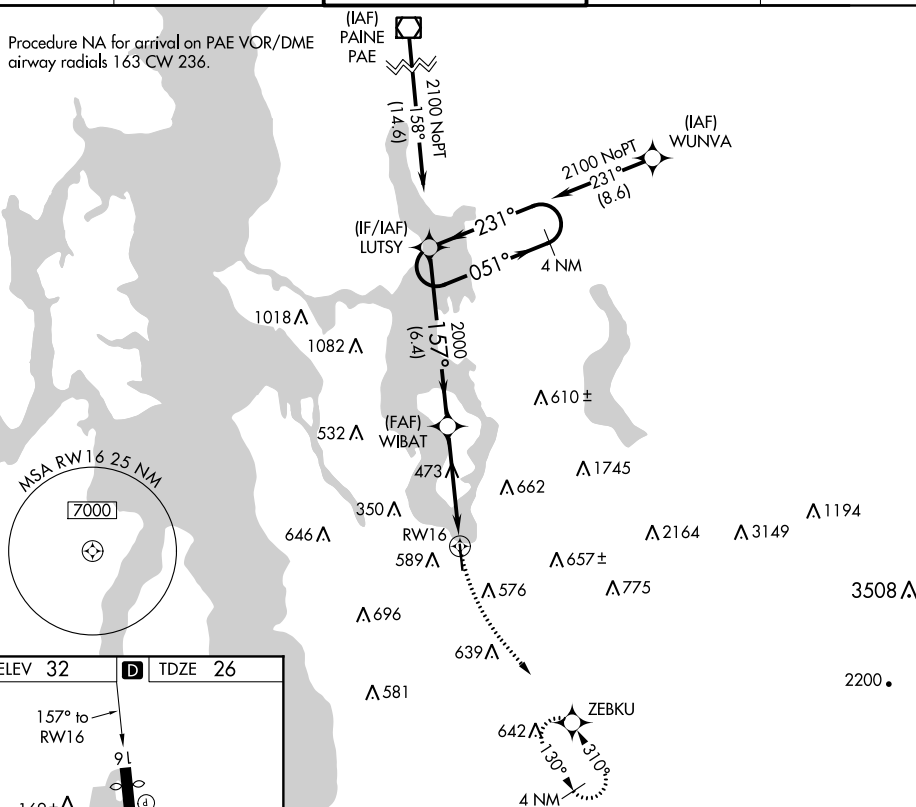
RNAV (GPS) Z RWY 16  
RENTON MUNI (RNT)

For uncompensated Baro-VNAV systems, LNAV/VNAV NA below -5°C (23°F) or above 48°C (119°F). DME/DME RNP-0.3 NA. Rwy 16 helicopter visibility reduction below 3/4 SM NA.

**MISSED APPROACH:** Climbing left turn to 2400 direct ZEBKU and hold.

ATIS 126.95	SEATTLE APP CON 119.2 284.7	RENTON TOWER★ 124.7 (CTAF) 0 256.9	GND CON 121.6 256.9	UNICOM 122.95
----------------	--------------------------------	---------------------------------------	------------------------	------------------

Procedure NA for arrival on PAE VOR/DME  
airway radials 163 CW 236.



4 NM Holding Pattern

VGSI and RNAV glidepath not coincident (VGSI Angle 3.00/TCH 50).

LUTSY

WIBAT

2100

051°

231°

157°

2000

GP 4.20° TCH 50

6.4 NM

4.3 NM

RW16

CATEGORY		A	B	C	D
LPV	DA	526-1 $\frac{3}{8}$	500 (500-1 $\frac{3}{8}$ )	NA	
LNAV/ VNAV	DA	668-1 $\frac{7}{8}$	642 (700-1 $\frac{7}{8}$ )	NA	