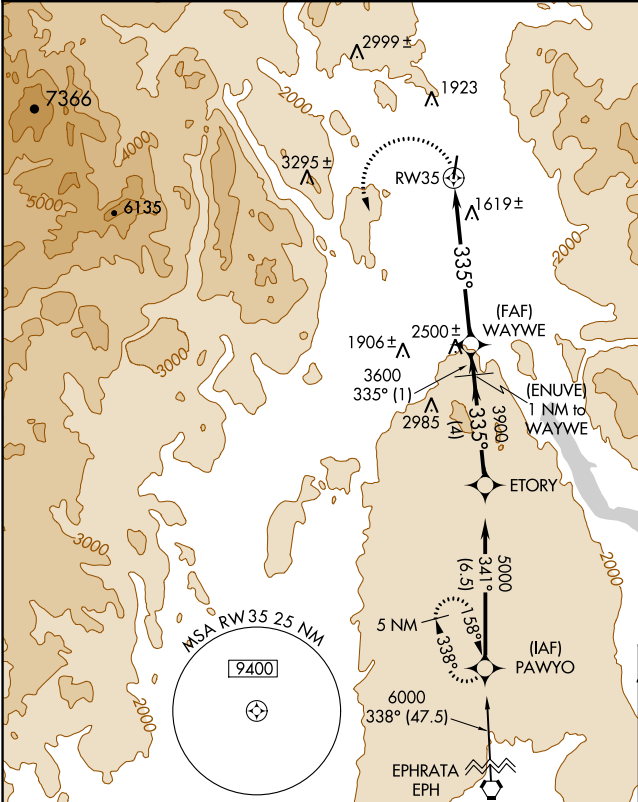


APP CRS 335°	Rwy Idg 4667
	TDZE 1299
	Apt Elev 1301

GPS RWY 35
OMAK (OMK)

NA -15°C	MISSED APPROACH: Climbing left turn to 5000 direct PAWYO WP and hold.
-------------	---

ASOS 118.325	SEATTLE CENTER 126.1 291.6	UNICOM 122.8 (CTAF) 0
------------------------	--------------------------------------	---------------------------------



ELEV 1301	TDZE 1299
REIL Rwy 17 and 35 0	
MIRL Rwy 17-35 0	

