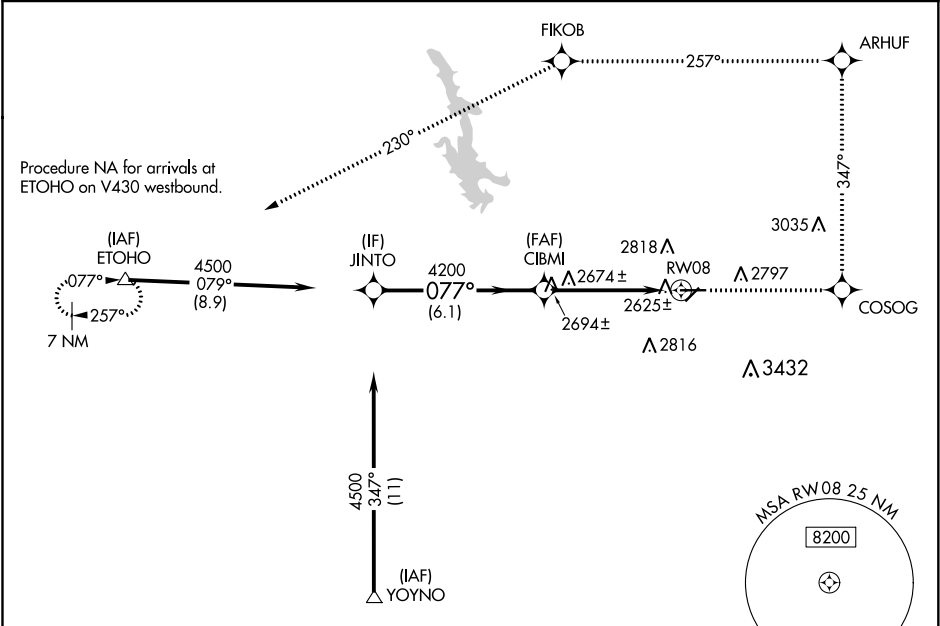


WAAS CH 99316 W08A	APP CRS 077°	Rwy Idg TDZE 2585 Apt Elev 2591
--	------------------------	---

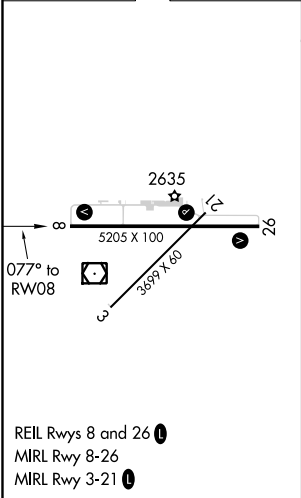
RNAV (GPS) RWY 8
HAVRE CITY-COUNTY (HVR)

RNP APCH.	<p>For uncompensated Baro-VNAV systems, LNAV/VNAV NA below -20°C or above 54°C.</p>	<p>MISSED APPROACH: Climb to 8000 direct COSOG and left on track 347° to ARHUF and left turn on track 257° to FIKOB and on track 230° to ETOHO and hold.</p>
-----------	---	--

ASOS 135.225	SALT LAKE CENTER 133.4 285.4	UNICOM 122.8 (CTAF) 0
------------------------	--	---------------------------------



ELEV 2591	D	TDZE 2585
-----------	----------	-----------



Procedure Turn NA	8000	COSOG	ARHUF	FIKOB	ETOHO
JINTO	4500	tr 347°	tr 257°	tr 230°	△
CIBMI	4200	*1.3 NM to RW08			
GP 3.00°	TCH 40				
6.1 NM	3.6 NM	1.3 NM			
CATEGORY	A	B	C	D	
LPV DA	2835-1 250 (300-1)				
LNAV/VNAV DA	2906-1¼ 321 (400-1¼)				
LNAV MDA	3020-1 435 (500-1)	3020-1¼ 435 (500-1¼)		3020-1½ 435 (500-1½)	
CIRCLING	3080-1 489 (500-1)	3120-1 529 (600-1)	3120-1½ 529 (600-1½)	3180-2 589 (600-2)	

NW-1, 03 DEC 2020 to 31 DEC 2020

NW-1, 03 DEC 2020 to 31 DEC 2020