

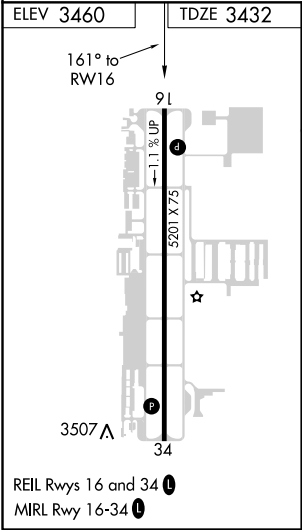
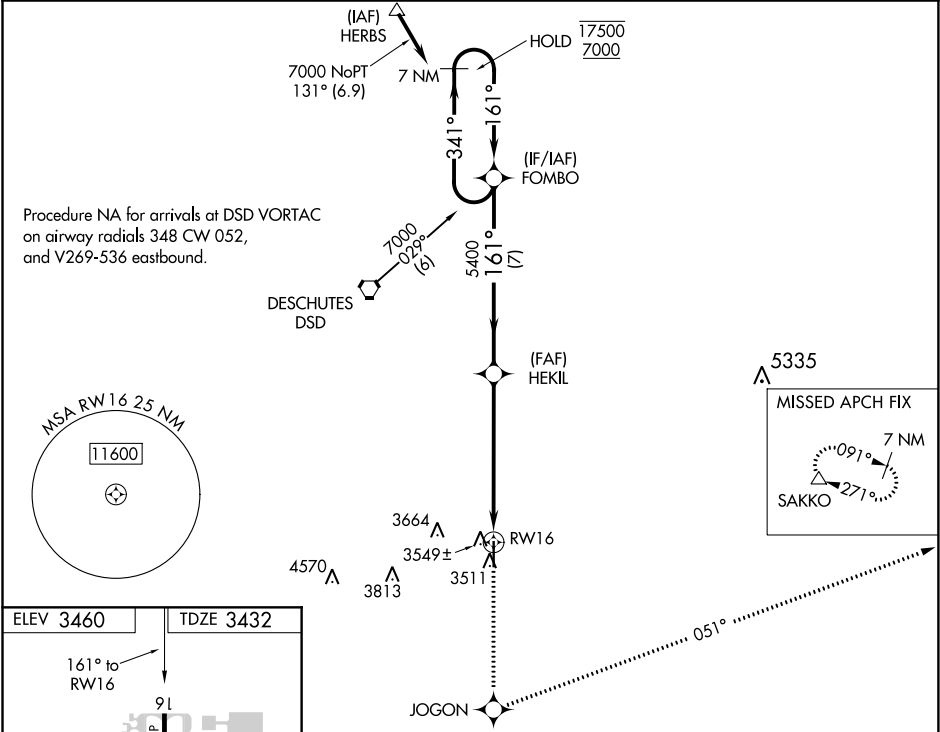
WAAS CH 81906 W16A	APP CRS 161°	Rwy Idg TDZE Apt Elev	5201 3432 3460
--	------------------------	-----------------------------	---

RNAV (GPS) Z RWY 16

BEND MUNI (BDN)

RNP APCH.	<p>▼ ▲ NA</p> <p>Rwy 16 helicopter visibility reduction below ¾ SM NA. For uncompensated Baro-VNAV systems, procedure NA below -21°C or above 42°C. When local altimeter setting not received, use Redmond altimeter setting and increase all DA/MDAs by 80 feet, LPV visibilities ¼ SM all Cats, LNAV/VNAV visibilities ¼ SM all Cats, LNAV Cat D visibility ¼ SM, and Circling Cat C visibility ¼ SM.</p>	<p>MISSED APPROACH: Climb to 9500 direct JOGON and left turn on track 051° to SAKKO and hold, continue climb-in-hold to 9500.</p>
-----------	---	---

AWOS-3 134.425	SEATTLE CENTER 126.15 269.475	UNICOM 123.0 (CTAF) 0
--------------------------	---	---------------------------------



7 NM Holding Pattern		FOMBO		9500	JOGON	tr 051°	SAKKO
17500 ← 341°		161° →		161°	5400	* 1.2 NM to RWY16	
7000		VGSi and RNAV glidepath not coincident (VGSi Angle 3.00/TCH 38).		5400	* LNAV only.		
GP 3.00° TCH 50		7 NM		4.8 NM		1.2 NM	
CATEGORY	A	B	C	D			
LPV DA	3682-1		250 (300-1)				
LNAV/VNAV DA	3809-1½		377 (400-1½)				
LNAV MDA	3840-1		408 (400-1)		3840-1¼		408 (400-1¼)
CIRCLING	3940-1		4000-1		4120-1¾		4640-3
	480 (500-1)		540 (600-1)		660 (700-1¾)		1180 (1200-3)

NW-1, 03 DEC 2020 to 31 DEC 2020

NW-1, 03 DEC 2020 to 31 DEC 2020