

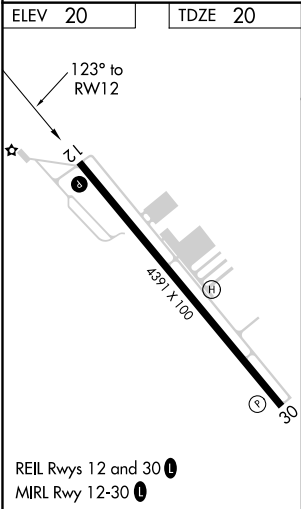
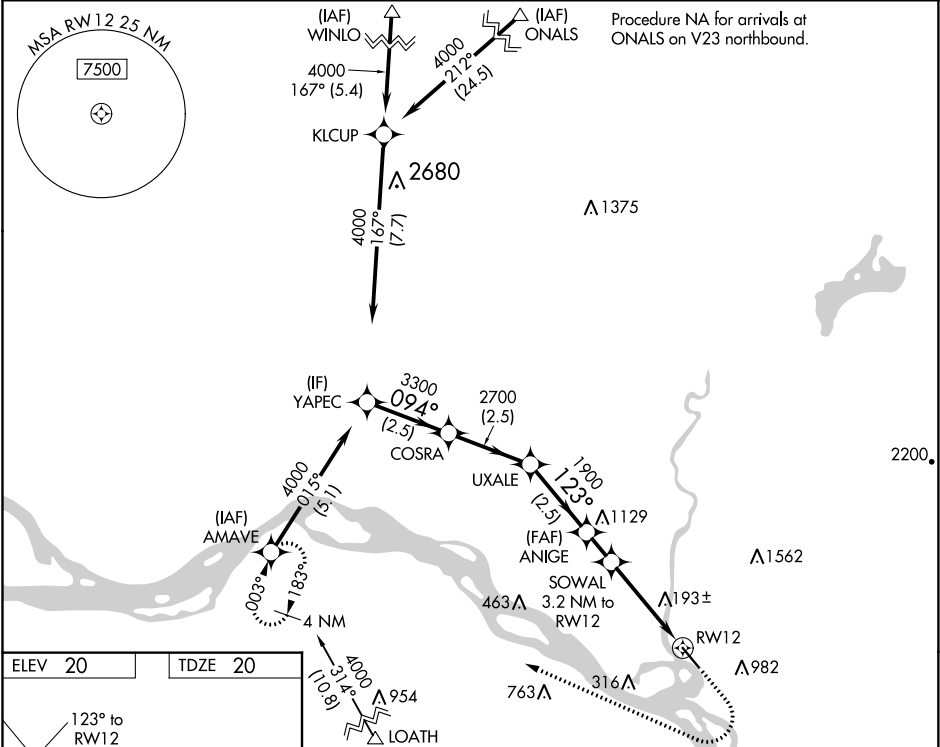
WAAS CH 65743 W12A	APP CRS 123°	Rwy Idg TDZE Apt Elev	4391 20 20
--	------------------------	-----------------------------	---------------------------------------

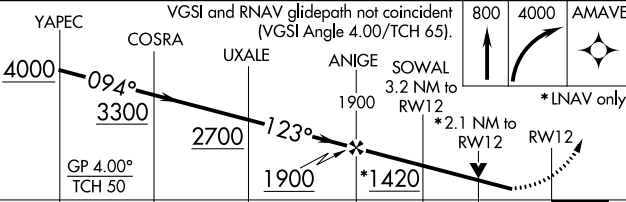
RNAV (GPS) RWY 12

SOUTHWEST WASHINGTON RGNL (KLS)

RNP APCH.	<div><div>▼</div><div>▲</div></div> <div>Circling NA northeast of Rwy 12-30. Circling Rwy 30 NA at night. Rwy 12 helicopter reduction below ¾ SM NA. For uncompensated Baro-VNAV systems, LNAV/VNAV NA below -6°C or above 54°C.</div>	MISSED APPROACH: Climb to 800 then climbing right turn to 4000 direct AMAVE and hold, continue climb-in-hold to 4000.
-----------	--	---

AWOS-3PT 135.075	SEATTLE CENTER 124.2 317.6	UNICOM 122.8 (CTAF) 0
----------------------------	--------------------------------------	---------------------------------



VGSi and RNAV glidepath not coincident (VGSi Angle 4.00/TCH 65).				800	4000	AMAVE
				↑	↷	✧
*LNAV only						
GP 4.00° TCH 50				*2.1 NM to RW12		
2.5 NM 2.5 NM 2.5 NM 1 NM 1.1 2.1 NM				RW12		
CATEGORY	A		B	C	D	
LPV DA	608-1¾ 588 (600-1¾)			NA		
LNAV/ VNAV	766-2 746 (800-2)			NA		
LNAV MDA	980-1¼ 960 (1000-1¼)	980-1½ 960 (1000-1½)		NA		
C CIRCLING	980-1¼ 960 (1000-1¼)	980-1½ 960 (1000-1½)		NA		

NW-1, 03 DEC 2020 to 31 DEC 2020

NW-1, 03 DEC 2020 to 31 DEC 2020