

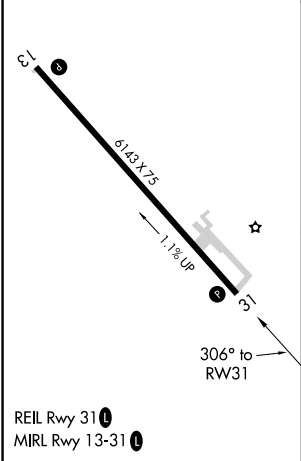
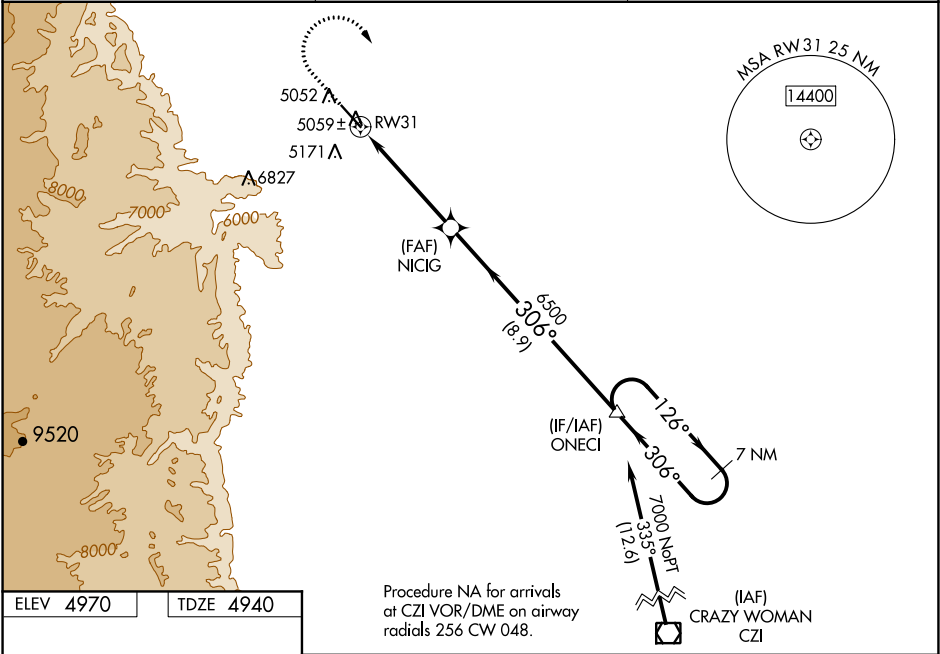
WAAS CH 48835 W31A	APP CRS 306°	Rwy Idg TDZE 4940 Apt Elev 4970
--	------------------------	---

RNAV (GPS) RWY 31
JOHNSON COUNTY (BYG)

⚠ When Rwy 13 VGSi inop, Circling Rwy 13 NA at night. Baro-VNAV and VDP NA when using Sheridan altimeter setting. For uncompensated Baro-VNAV systems, LNAV/VNAV NA below -27°C (-16°F) or above 48°C (120°F). Circling NA southwest of Rwy 13-31. DME/DME RNP-0.3 NA. When local altimeter setting not received, use Sheridan altimeter setting and increase all DA/MDA 200 feet; increase all LPV, LNAV/VNAV, and all LNAV and Circling Cat C/D visibilities ¾ mile.

MISSED APPROACH: Climb to 6000, then climbing right turn to 7000 direct ONECI and hold.

ASOS 135,425	SALT LAKE CENTER 127.75 351.9	UNICOM 122.8 (CTAF)
------------------------	---	-------------------------------



6000		7000	ONECI	VGSi and RNAV glidepath not coincident. (VGSi Angle 3.00/TCH 42)	
↑		↗	△		
* LNAV only					
CATEGORY		A	B	C	D
LPV	DA	5190-¾		250 (300-¾)	
LNAV/ VNAV	DA	5275-1½		335 (400-1½)	
LNAV	MDA	5320-1	380 (400-1)	5320-1½	380 (400-1½)
C CIRCLING		5440-1	470 (500-1)	5460-1½ 490 (500-1½)	5600-2 630 (700-2)

NW-1, 03 DEC 2020 to 31 DEC 2020

NW-1, 03 DEC 2020 to 31 DEC 2020