

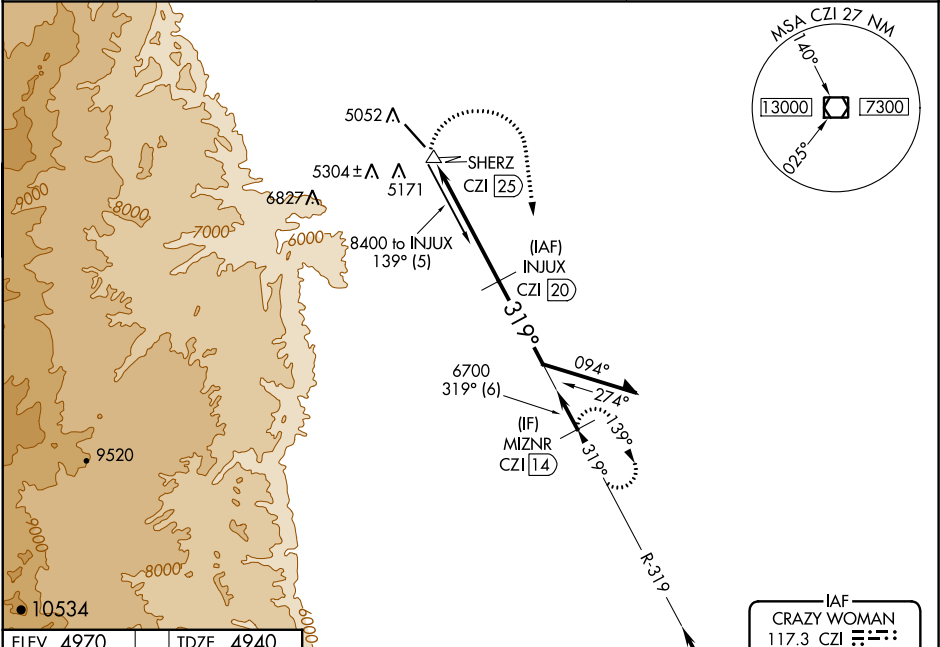
VOR/DME CZI	APP CRS	Rwy Idg
117.3	319°	6143
Chan 120		TDZE 4940
		Apt Elev 4970

VOR/DME RWY 31
JOHNSON COUNTY (BYG)

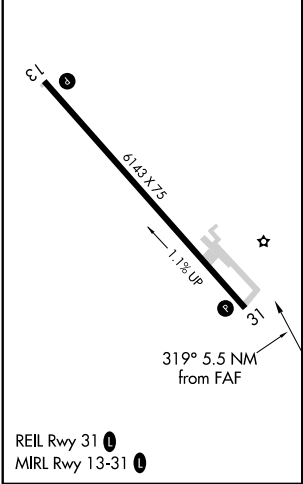
⚠ Visibility reduction by helicopters NA. If local altimeter setting not received, use Sheridan altimeter setting and increase all MDAs 600 feet. When VGSI inoperative, procedure NA at night. Circling NA southwest of Rwy 13-31.

MISSED APPROACH: Climbing right turn to 7600 via heading 160° and CZI VOR/DME R-319 to MIZNR/14 DME and hold.

ASOS 135.425	SALT LAKE CENTER 127.75 351.9	UNICOM 122.8 (CTAF) 0
-----------------	----------------------------------	---------------------------------



ELEV 4970	TDZE 4940
-----------	-----------



7600 hdg 160°

CZI R-319

MIZNR CZI 14

INJUX CZI 20

VGSI and descent angles not coincident (VGSI Angle 3.00/TCH 42).

Remain within 10 NM

7600

139°

319°

6700

ZEDRI CZI 25.2

≤ 3.02° TCH 32

0.4 5.1 NM

CATEGORY	A	B	C	D
S-31	5680-1 740 (800-1)	5680-1¼ 740 (800-1¼)	5680-2¼ 740 (800-2¼)	5680-2½ 740 (800-2½)
C CIRCLING	5680-1 710 (800-1)	5680-1¼ 710 (800-1¼)	5680-2¼ 710 (800-2¼)	5680-2½ 710 (800-2½)

NW-1, 03 DEC 2020 to 31 DEC 2020

NW-1, 03 DEC 2020 to 31 DEC 2020