

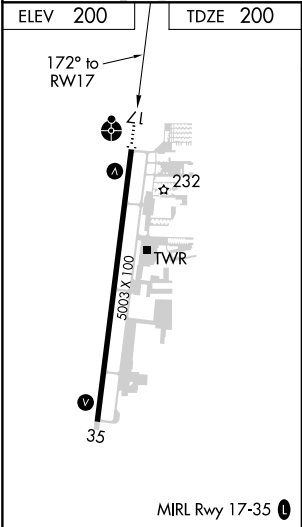
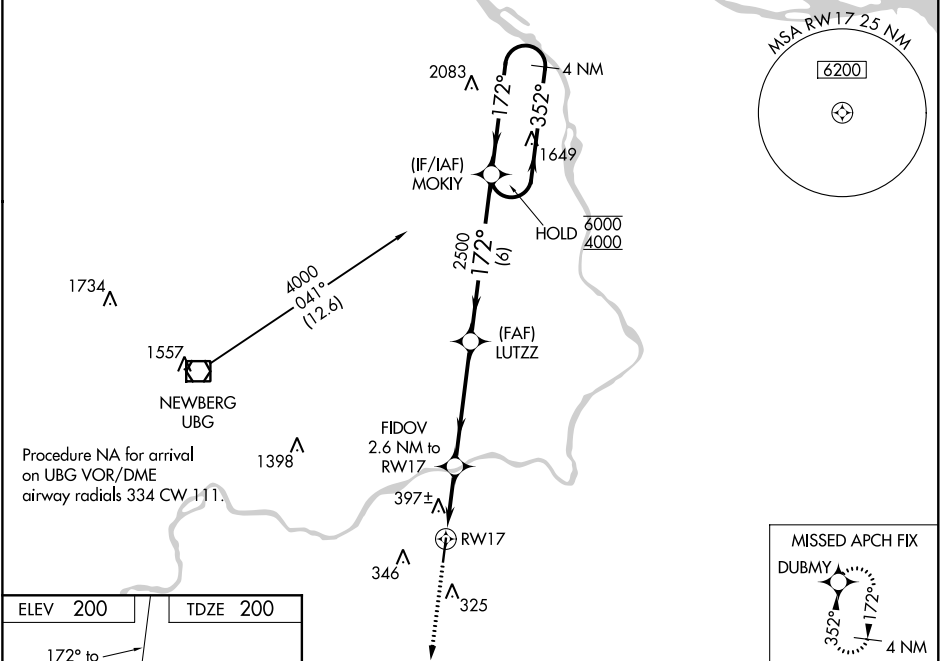
WAAS CH 70308 W17A	APP CRS 172°	Rwy Idg 5003 TDZE 200 Apt Elev 200
--	------------------------	---

RNAV (GPS) RWY 17

AURORA STATE (UAO)

RNP APCH.	ODALS	MISSED APPROACH: Climb to 3900 direct DUBMY and hold, continue climb-in-hold to 3900.
▼ Rwy 17 helicopter visibility reduction below ¾ SM NA. For uncompensated Baro-VNAV systems, LNAV/VNAV NA below -6°C or above 54°C. ▲ For inop ALS, increase LNAV/VNAV Cat A/B and LNAV Cat C/D visibility to 1½ SM. Inop table does not apply to LPV and LNAV Cat A/B.		

ATIS ★ 118.525	PORTLAND APP CON 126.0 269.175	AURORA TOWER ★ 120.35 (CTAF) 0	GND CON 119.15	CLNC DEL 119.15	PORTLAND CLNC DEL 119.95 (When tower closed)
--------------------------	--	--	--------------------------	---------------------------	---



3900	DUBMY	VGSI and RNAV glidepath not coincident (VGSI Angle 3.50/TCH 38).	MOKIY	4 NM Holding Pattern
↑		FIDOV 2.6 NM to RW17	LUTZZ	2500
*LNAV only	*1.1 NM to RW17	RW17	1060*	352° → 6000 ← 172° 4000
1.1	1.5 NM	4.5 NM	6 NM	GP 3.00° TCH 40
CATEGORY	A	B	C	D
LPV	DA	511-7/8	311 (400-7/8)	
LNAV/ VNAV	DA	661-1¼	461 (500-1¼)	
LNAV	MDA	660-1 460 (500-1)	660-1½ 460 (500-1½)	
	CIRCLING	700-1 500 (500-1)	700-1½ 500 (500-1½)	940-2¼ 740 (800-2¼)