

WAAS CH 86204 W34A	APP CRS 341°	Rwy Idg TDZE Apt Elev	7500 4364 4364
--	------------------------	-----------------------------	---

RNAV (GPS) RWY 34
NORTHEAST WYOMING RGNL (GCC)

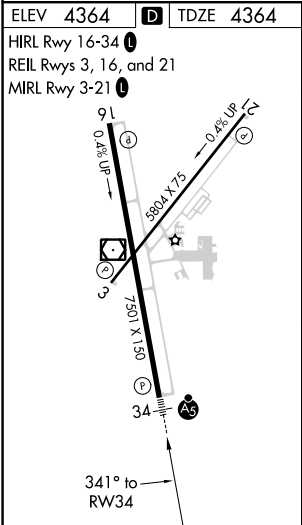
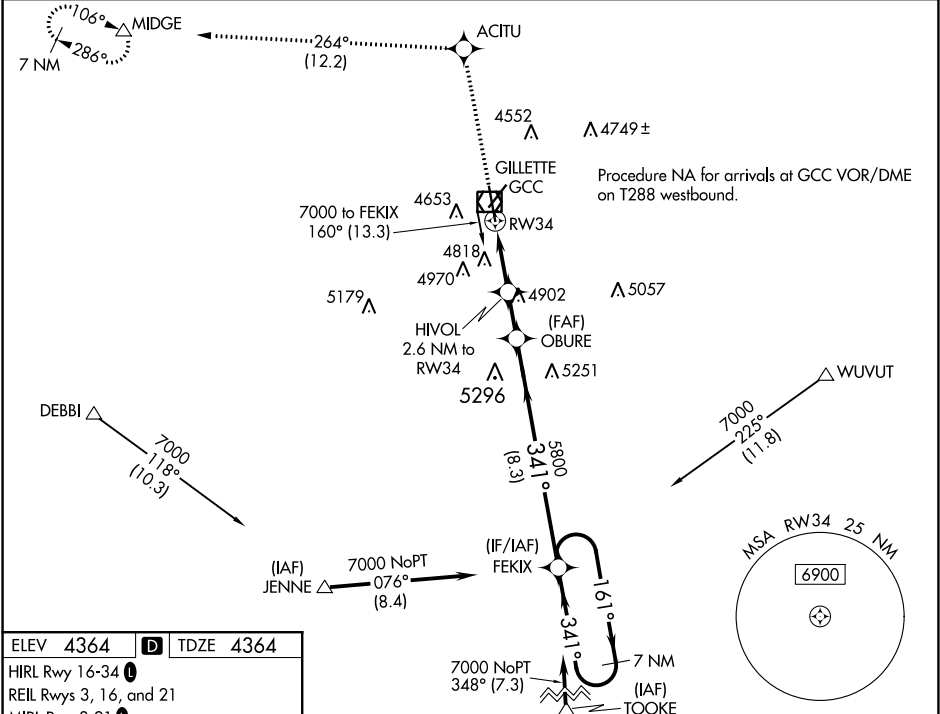
⚠ Circling to Rwy 3 NA at night. Inop table does not apply to LPV and LNAV/VNAV. For uncompensated Baro-VNAV systems, LNAV/VNAV NA below -23°C (-9°F) or above 54°C (130°F). DME/DME RNP-0.3 NA. For inop ALS, increase LNAV Cat A visibility to 1 SM, Cat C to 2 SM. Rwy 34 helicopter visibility reduction below ¾ SM NA.

MALSR

⚠

MISSED APPROACH: Climb to 7000 direct ACITU and on track 264° to MIDGE and hold.

ASOS 124.175	DENVER CENTER 135.6 363.025	UNICOM 122.95	CTAF 118.5
------------------------	---------------------------------------	-------------------------	----------------------



7000	ACITU	tr 264°	MIDGE	VGSI and RNAV glidepath not coincident. (VGSI Angle 3.20/TCH 56)
*LNAV only.	HIVOL 2.6 NM to RW34	*2.1 NM to RW34	OBURE	FEKIX
			5800	7 NM Holding Pattern
			5240*	161° → 7000
				← 341°
				GP 3.00° TCH 52
CATEGORY	A	B	C	D
LPV DA		4619-¾	255 (300-¾)	
LNAV/VNAV DA		5479-4	1115 (1200-4)	
LNAV MDA	5120-¾	756 (800-¾)	5120-1¾ 756 (800-1¾)	5120-2 756 (800-2)
C CIRCLING	5120-1 756 (800-1)	5240-1¼ 876 (900-1¼)	5400-3	1036 (1100-3)

NW-1, 03 DEC 2020 to 31 DEC 2020

NW-1, 03 DEC 2020 to 31 DEC 2020