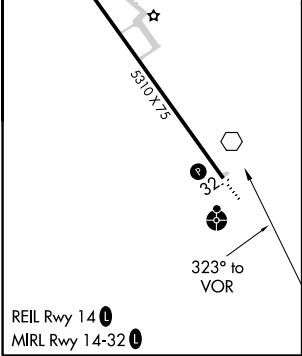
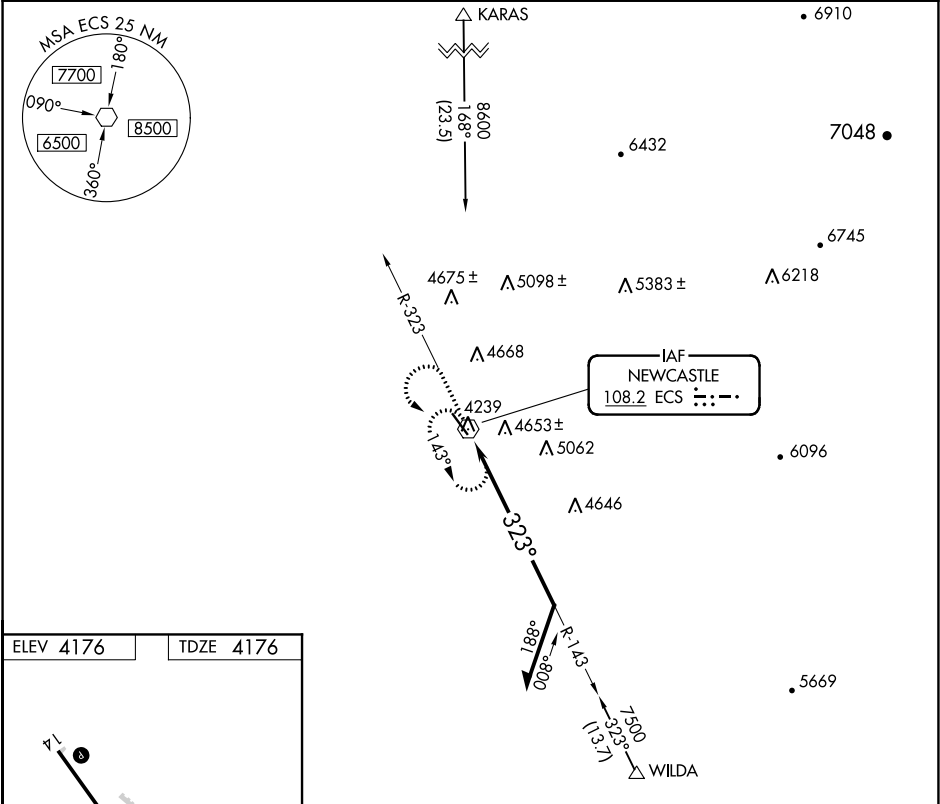


VOR ECS <b>108.2</b>	APP CRS <b>323°</b>	Rwy Idg TDZE Apt Elev	<b>5310</b> <b>4176</b> <b>4176</b>
-------------------------	------------------------	-----------------------------	---

VOR RWY 32  
MONDELL FIELD (ECS)

<div><div>▼</div><div>▲</div></div> <p>When Newcastle altimeter setting not received, procedure NA. Circling NA NE of Rwy 14-32.</p>	<div><div>ODALS</div><div></div></div> <p>MISSED APPROACH: Climb to 6700 on ECS VOR R-323 then climbing left turn to 7500 direct ECS VOR and hold, continue climb-in-hold to 7500.</p>
--	--

AWOS-3PT <b>118.0</b>	DENVER CENTER <b>127.95 338.2</b>	UNICOM <b>122.8 (CTAF) 0</b>
--------------------------	--------------------------------------	---------------------------------



6700 ECS R-323		7500 ECS	ECS VOR 6800		Remain within 10 NM
			143°		6400
			323°		
CATEGORY	A	B	C	D	
S-32	4980-3/4 804 (900-3/4)	4980-1 804 (900-1)	4980-2 1/2 804 (900-2 1/2)	804 (900-2 1/2)	
CIRCLING	4980-1 804 (900-1)	4980-1 1/4 804 (900-1 1/4)	4980-2 1/2 804 (900-2 1/2)	5000-2 3/4 824 (900-2 3/4)	