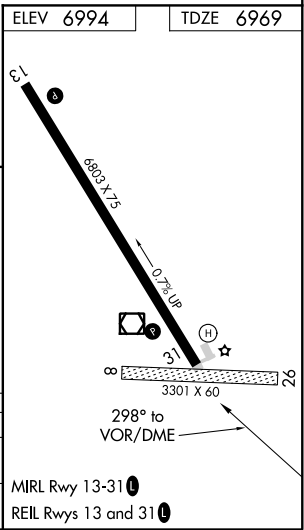
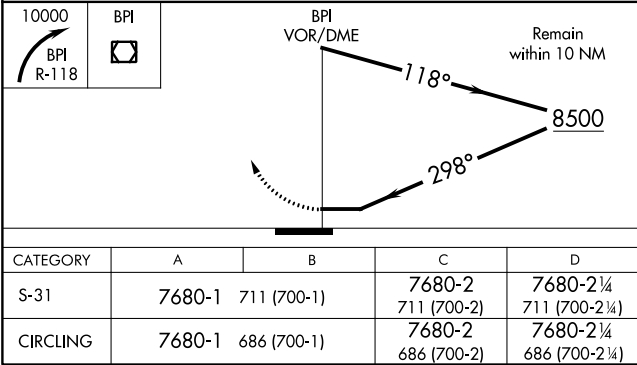
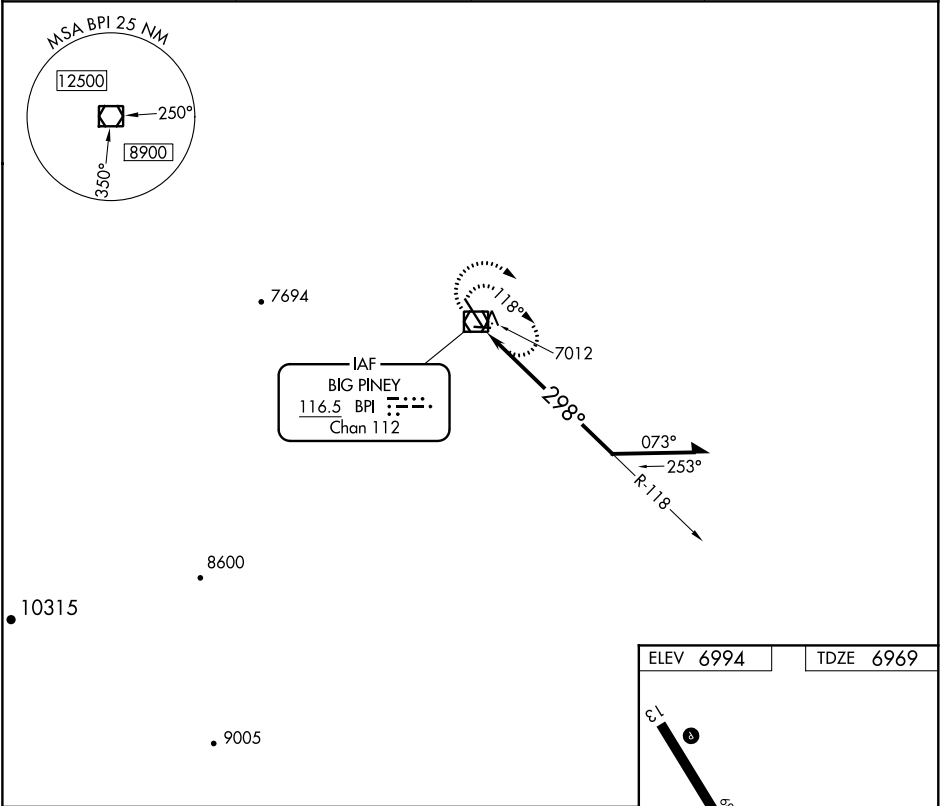


VOR/DME BPI 116.5 Chan 112	APP CRS 298°	Rwy Idg TDZE Apt Elev 6803 6969 6994
--	------------------------	--

VOR RWY 31
MILEY MEMORIAL FIELD (BPI)

 Circling NA to Rwy 8 and 26.	MISSED APPROACH: Climbing right turn to 10000 on BPI R-118, then return to BPI VOR/DME and hold.
--	--

ASOS 135.225	SALT LAKE CENTER 128.35 239.25	UNICOM 122.8 (CTAF)	122.70
------------------------	--	-------------------------------	---------------



NW-1, 03 DEC 2020 to 31 DEC 2020

NW-1, 03 DEC 2020 to 31 DEC 2020