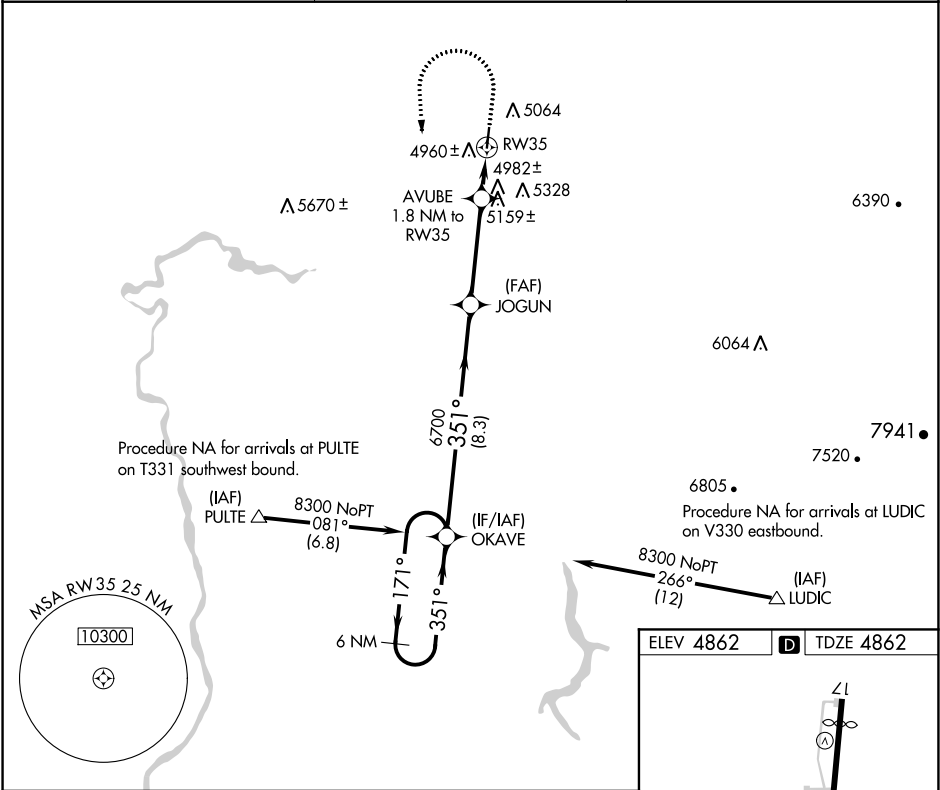


APP CRS	Rwy Idg	3900
351°	TDZE	4862
	Apt Elev	4862

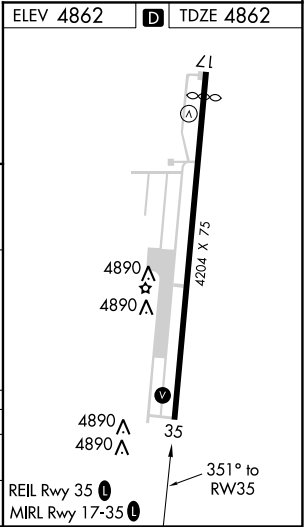
RNAV (GPS) RWY 35
REXBURG-MADISON COUNTY (R.XE)

<p>⚠ Rwy 35 helicopter visibility reduction below ¾ SM NA. DME/DME RNP-0.3 NA. When local altimeter setting not received, use Idaho Falls altimeter setting and increase all MDA 80 feet and increase LNAV Cat C/D visibility ½ SM and Circling Cat C/D visibility ¼ SM. Circling Rwy 35 NA at night.</p>	<p>MISSED APPROACH: Climb to 5600 then climbing left turn to 8300 direct OKAVE and hold.</p>
--	---

ASOS 135.075	SALT LAKE CENTER 128.35 239.25	UNICOM 122.8 (CTAF) 0
-----------------	-----------------------------------	---------------------------------



<p>6 NM Holding Pattern</p> <p>OKAVE</p> <p>JOGUN</p> <p>AVUBE 1.8 NM to RW35</p> <p>RW35</p> <p>5600</p> <p>8300</p> <p>OKAVE</p> <p>3.00° TCH 40</p> <p>6700</p> <p>5480</p> <p>8.3 NM</p> <p>3.8 NM</p> <p>1.8 NM</p>				
CATEGORY	A	B	C	D
LNAV MDA	5260-1	398 (400-1)	5260-1½	398 (400-1½)
CIRCLING	5380-1 518 (600-1)	5580-1 718 (800-1)	5680-2½ 818 (900-2½)	5760-3 898 (900-3)



NW-1, 03 DEC 2020 to 31 DEC 2020

NW-1, 03 DEC 2020 to 31 DEC 2020