

WAAS
CH 77929
W11A

APP CRS
111°

Rwy Idg
TDZE 1988
Apt Elev 1989

RNAV (GPS) RWY 11

L M CLAYTON (OLF')

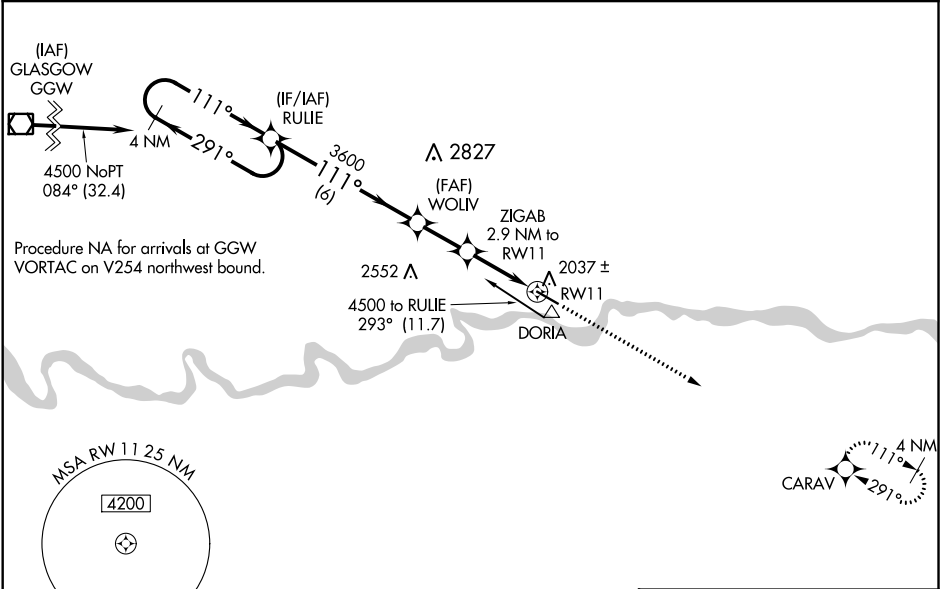
⚠

-38°C

For uncompensated Baro-VNAV systems, LNAV/VNAV NA below -18°C (0°F) or above 54°C (130°F). DME/DME RNP-0.3 NA. When local altimeter not received, use Glasgow altimeter setting and increase all DA 141 feet and all MDA 160 feet and increase LPV all Cats visibility ¾ mile; LNAV/VNAV all Cats ½ mile; LNAV Cats C/D ½ mile; Circling Cat C ½ mile and Cat D ¼ mile. Baro-VNAV and VDP NA with Glasgow altimeter setting.

MISSED APPROACH:
Climb to 4800 direct CARAV and hold.

ASOS 118.325	SALT LAKE CENTER 126.85 305.2	UNICOM 122.8 (CTAF) 1
-----------------	----------------------------------	--------------------------



ELEV 1989

TDZE 1988

4 NM Holding Pattern

VGSI and RNAV glidepath not coincident (VGSI Angle 3.00/TCH 28).

4800 CARAV

* LNAV only.

4500 ← 291°

111° →

GP 3.00°

TCH 40

RULIE

WOLIV

ZIGAB

2.9 NM to RW11

* 1.5 NM to RW11

3600

* 2940

6 NM

2 NM

1.4 NM

1.5 NM

CATEGORY	A	B	C	D
LPV DA	2188-¾ 200 (200-¾)			
LNAV/VNAV DA	2266-7/8 278 (300-7/8)			
LNAV MDA	2500-1	512 (600-1)	2500-1¾	512 (600-1¾)
CIRCLING	2500-1	511 (600-1)	2500-1½	2540-2
			511 (600-1½)	551 (600-2)

MIRL Rwy 11-29 1

REIL Rwy 11-29 1