

WAAS

CH **53500**

W11A

APP CRS

110°

Rwy Idg

5480

TDZE

145

Apt Elev

145

RNAV (GPS) RWY 11

SKAGIT RGNL (BVS)

⚠

⚠

Circling to Rwy 04 NA at night. For uncompensated Baro-VNAV systems, LNAV/VNAV NA below -15°C (5°F) or above 54°C (130°F). Baro-VNAV and VDP NA when using Friday Harbor altimeter setting. DME/DME RNP-0.3 NA. When local altimeter setting not received use Friday Harbor altimeter setting: increase LPV DA to 561 feet, LNAV/VNAV DA to 710 feet and all Cats visibilities ¼ SM; increase all MDA 60 feet and Cats C and D visibility ¼ SM. Helicopter visibility reduction below ¾ SM NA.

MISSED APPROACH: Climb to 1000 then climbing right turn to 3900 direct SOCLO and hold, continue climb-in-hold to 3900.

AWOS-3

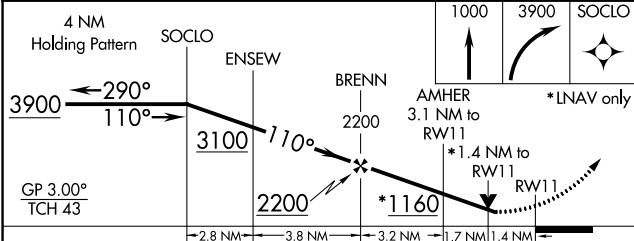
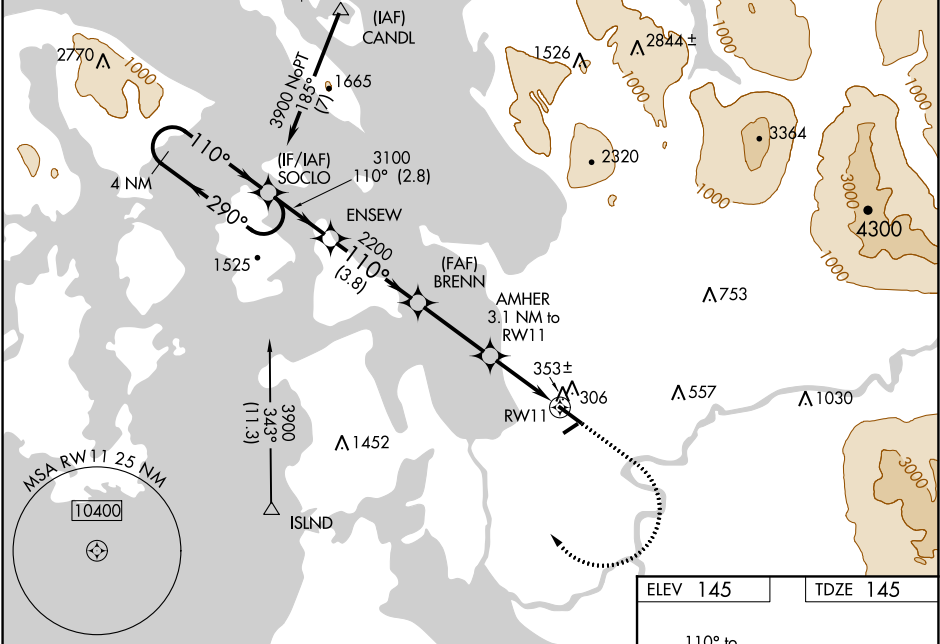
121.125

WHIDBEY APP CON

120.7 270.8

UNICOM

123.075 (CTAF)



CATEGORY	A	B	C	D
LPV DA	500-1¼		355 (400-1¼)	
LNAV/VNAV DA	649-1¾		504 (600-1¾)	
LNAV MDA	620-1	475 (500-1)	620-1¾ 475 (500-1¾)	700-1¾ 555 (600-1¾)
CIRCLING	680-1 535 (600-1)	700-1 555 (600-1)	700-1½ 555 (600-1½)	1000-2¾ 855 (900-2¾)

