

|  |                        |                             |   |
|--|------------------------|-----------------------------|---|
| WAAS<br>CH <b>61038</b><br><b>W05A</b> | APP CRS<br><b>053°</b> | Rwy Idg<br>TDZE<br>Apt Elev | <b>5005</b><br><b>270</b><br><b>273</b> |
|--|------------------------|-----------------------------|---|

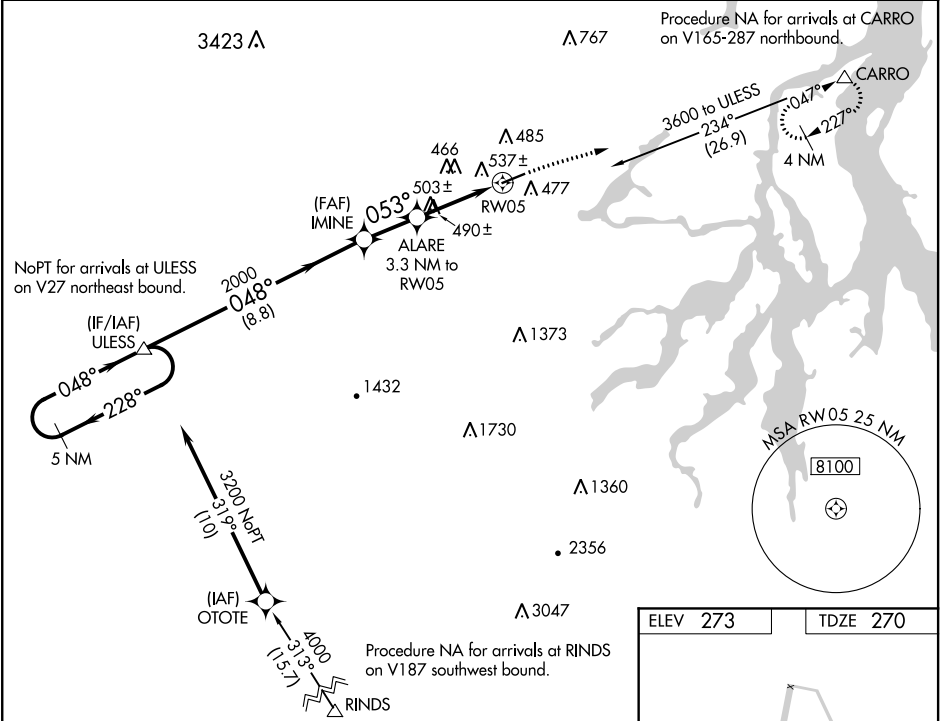
RNAV (GPS) RWY 5

SANDERSON FIELD (SHN)

DME/DME RNP-0.3 NA. Circling NA for Cats C and D south of Rwy 5-23. Helicopter visibility reduction below ¾ SM NA. When local altimeter setting not received, use Olympia altimeter setting and increase all MDA by 60 feet, increase LP and LNAV visibility Cats C, D and Circling Cat C visibility ½ mile.

MISSED APPROACH: Climb to 3000 direct CARRO and hold.

|                        |                                       |                                 |
|------------------------|---------------------------------------|---------------------------------|
| ASOS<br><b>119.275</b> | SEATTLE APP CON<br><b>121.1 290.9</b> | UNICOM<br><b>122.8 (CTAF) 0</b> |
|------------------------|---------------------------------------|---------------------------------|



|  |       |             |              |              |
|--|-------|-------------|--------------|--------------|
| Visual Segment - Obstacles.  |       |             |              |              |
| <div>5 NM Holding Pattern</div> <div>3200 ← 228° 048° → 2000 048° 053° 1340 RW05</div> <div>8.8 NM 2 NM 3.3 NM</div> |       |             |              |              |
| Visual Segment - Obstacles.  |       |             |              |              |
| <div>3000 CARRO</div> <div>*LNAV only</div> <div>RW05</div>  |       |             |              |              |
| CATEGORY   | A     | B           | C            | D            |
| LP MDA   | 740-1 | 470 (500-1) | 740-1½       | 470 (500-1½) |
| LNAV MDA   | 800-1 | 530 (600-1) | 800-1½       | 530 (600-1½) |
| CIRCLING   | 840-1 | 567 (600-1) | 840-1½       | 1200-3       |
|  |       |             | 567 (600-1½) | 927 (1000-3) |

ELEV 273 TDZE 270

5005 X 100

0.3% UP

053° to RW05

REIL Rwy 23 0

MIRL Rwy 5-23 0