

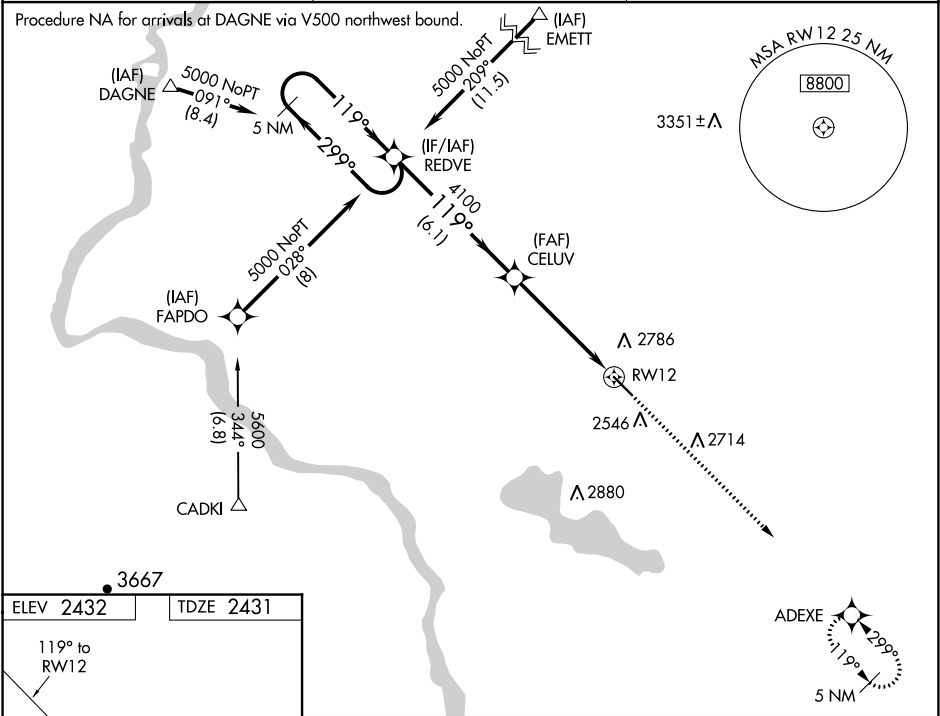
WAAS CH 97707 W12A	APP CRS 119°	Rwy Idg TDZE 2431 Apt Elev 2432
--	------------------------	---

RNAV (GPS) RWY 12

CALDWELL INDUSTRIAL (EUL)

RNP APCH.	<div><div><div></div><div></div></div><div>Rwy 12 helicopter visibility reduction below ¾ SM NA. Baro-VNAV NA when using Boise altimeter setting. For uncompensated Baro-VNAV systems, LNAV/VNAV NA below -19°C or above 44°C. When local altimeter setting not received, use Boise altimeter setting and increase all DA/MDA 120 feet and all visibilities ½ mile.</div></div>	MISSED APPROACH: Climb to 5000 direct ADEXE and hold.
-----------	---	---

AWOS-3PT 135.075	BIG SKY APP CON 119.6 269.4	UNICOM 122.7 (CTAF) 0
----------------------------	---------------------------------------	---------------------------------



5 NM Holding Pattern		REDVE	CELUV	5000	ADEXE
5000		299°	119°	119°	
GP 3.00° TCH 42			4100		
		6.1 NM	5.1 NM		
CATEGORY	A	B	C	D	
LPV DA	2700-1 269 (300-1)				
LNAV/VNAV DA	2994-2 563 (600-2)				
LNAV MDA	2840-1	409 (500-1)	2840-1¼	409 (500-1¼)	

NW-1, 03 DEC 2020 to 31 DEC 2020

NW-1, 03 DEC 2020 to 31 DEC 2020