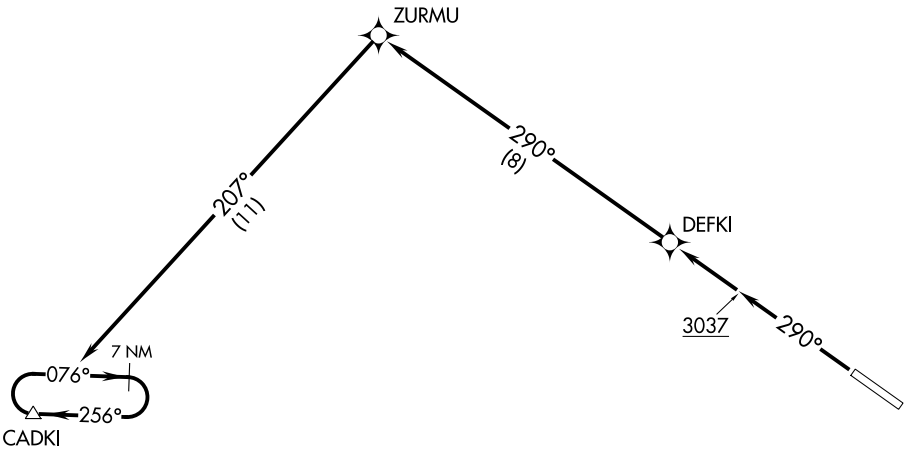


BIG SKY DEP CON
119.6 269.4
CTAF
122.7



NOTE: RNAV 1.
NOTE: GPS required.

TAKEOFF MINIMUMS
Rwy 29: Standard.

TAKEOFF OBSTACLE NOTES
Rwy 29: Poles beginning 38' from DER, 269' left of centerline, up to 38' AGL/2565' MSL.
Building, and vehicles on roads beginning 83' from DER, 289' right of centerline, up to 25' AGL/2561' MSL.
Trees, and pole beginning 560' from DER, 455' right of centerline, up to 68' AGL/2599' MSL.
Building, and pole beginning 1050' from DER, 154' left of centerline, up to 48' AGL/2575' MSL.
Tree, elevator, and hopper beginning 1209' from DER, 327' left of centerline, up to 81' AGL/2602' MSL.

NOTE: Chart not to scale.

DEPARTURE ROUTE DESCRIPTION

TAKEOFF RUNWAY 29: Climb heading 290° to 3037, then direct DEFKI, then on track 290° to ZURMU, then on track 207° to CADKI, then continue climb in CADKI holding pattern, expect further clearance when reaching 8000.