

WAAS CH <b>78202</b> <b>W11A</b>	APP CRS <b>110°</b>	Rwy Idg TDZE <b>2537</b> Apt Elev <b>2537</b>
--	------------------------	---

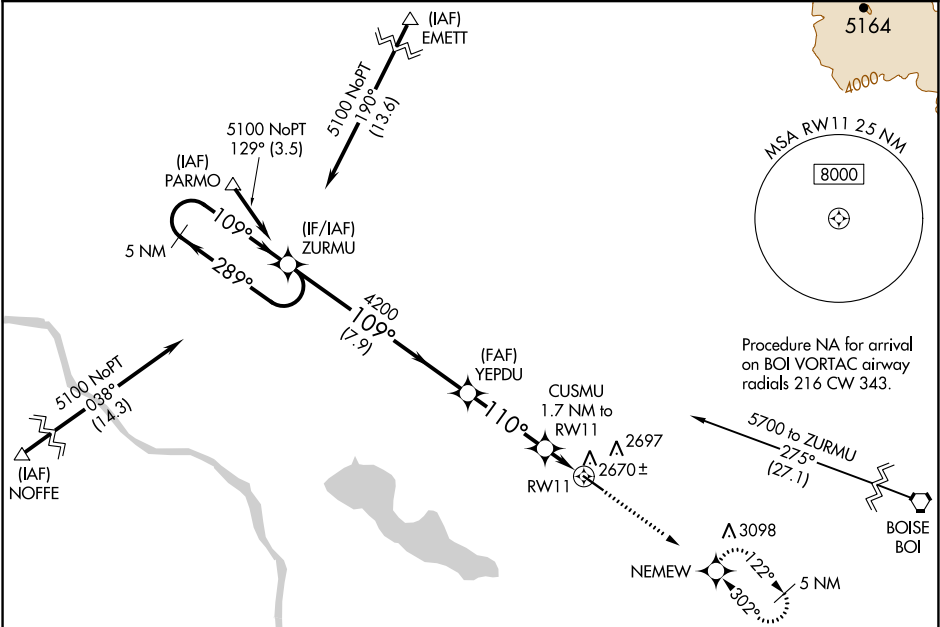
RNAV (GPS) RWY 11  
NAMPA MUNI (MAN)

**▼** For uncompensated Baro-VNAV systems, LNAV/VNAV NA below -20°C (-4°F) or above 54°C (130°F). When Circling to Rwy 29 at night, operational VGSI required, remain on or above VGSI glidepath until threshold. DME/DME RNP-0.3 NA.

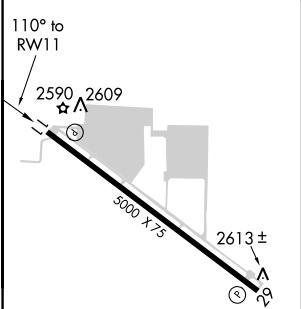
**▲** Rwy 11 helicopter visibility reduction below ¾ SM NA.



MISSED APPROACH: Climb to 5100 direct NEMEW and hold, continue climb-in-hold to 5100.

AWOS-3 <b>118.325</b>	BIG SKY APP CON <b>119.6 269.4</b>	UNICOM <b>122.7 (CTAF) 0</b>
--------------------------	---------------------------------------	---------------------------------



ELEV <b>2537</b>	TDZE <b>2537</b>
------------------	------------------



MIRL Rwy 11-29 		INAV/ VNAV	DA	2851-1 314 (400-1)			
		LNAV	MDA	2920-1	383 (400-1)	2920-1 <sup>1</sup> / <sub>8</sub>	383 (400-1 <sup>1</sup> / <sub>8</sub> )
		 CIRCLING		3060-1	523 (600-1)	3100-1 <sup>1</sup> / <sub>2</sub> 563 (600-1 <sup>1</sup> / <sub>2</sub> )	3220-2 <sup>1</sup> / <sub>4</sub> 683 (700-2 <sup>1</sup> / <sub>4</sub> )

NW-1, 03 DEC 2020 to 31 DEC 2020

NW-1, 03 DEC 2020 to 31 DEC 2020