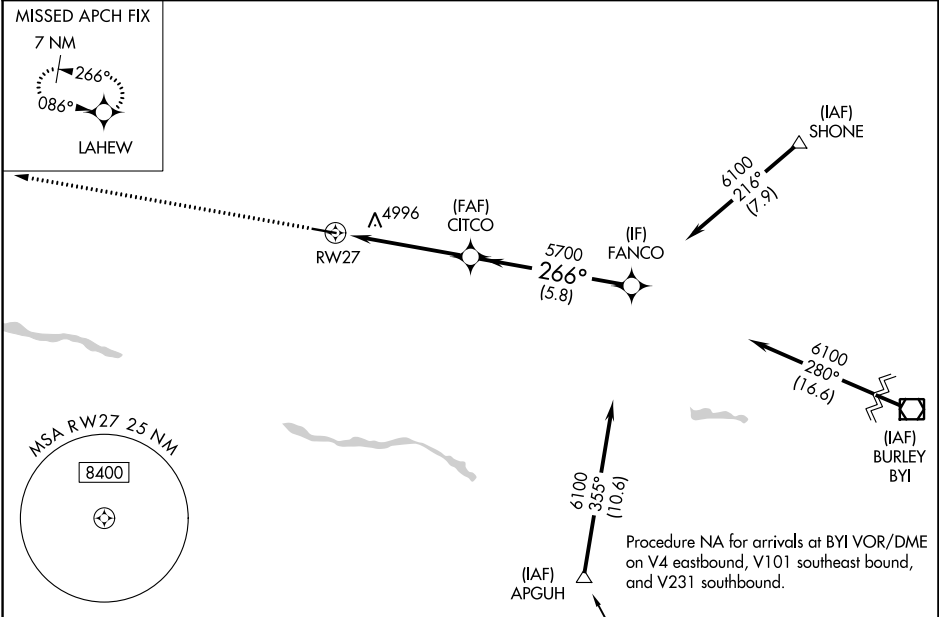


WAAS CH 90514 W27A	APP CRS 266°	Rwy Idg TDZE Apt Elev	5001 4053 4053
--	------------------------	-----------------------------	---

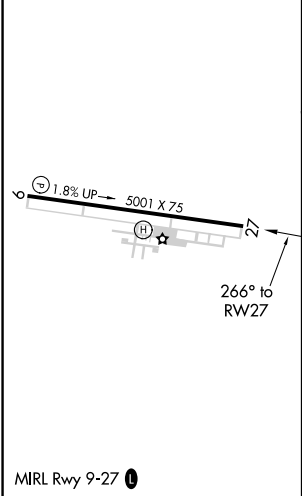
RNAV (GPS) RWY 27
JEROME COUNTY (JER)

RNP APCH.	MISSED APPROACH: Climb to 6500 direct LAHEW and hold.
<div><div><div>T</div><div>A</div></div><div>Circling NA north of Rwy 9 and 27. Rwy 27 helicopter visibility reduction below ¾ SM NA.</div></div>	

ASOS 135.225	TWIN FALLS APP CON★ 126.7 353.75	UNICOM 122.8 (CTAF) 0
------------------------	--	---------------------------------



ELEV 4053	TDZE 4053
-----------	-----------



Procedure NA for arrivals at DRYAD on V484 southeast bound.				
6500 LAHEW				
*LNAV only				
RW27 CITCO FANCO				
*3.7 NM to RW27				
GP 3.00° TCH 58				
CATEGORY	A	B	C	D
LPV DA	4403-1 350 (400-1)			
LNAV MDA	5300-1¼ 1247 (1300-1¼)	5300-1½ 1247 (1300-1½)	5300-3	1247 (1300-3)
CIRCLING	5300-1¼ 1247 (1300-1¼)	5300-1½ 1247 (1300-1½)	5300-3	1247 (1300-3)