

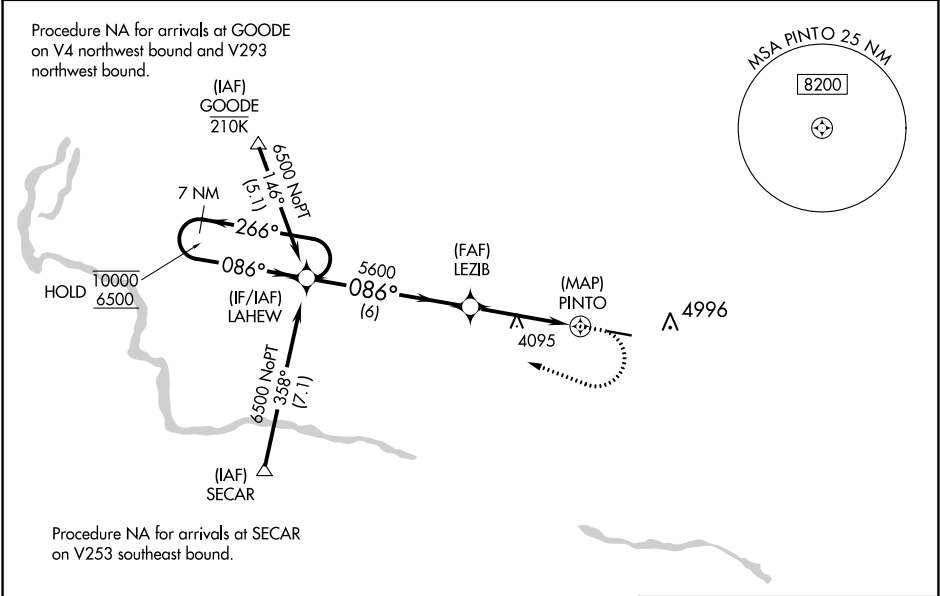
WAAS CH <b>90144</b> <b>W09A</b>	APP CRS <b>086°</b>	Rwy Idg TDZE Apt Elev	<b>5001</b> <b>4019</b> <b>4053</b>
--	------------------------	-----------------------------	---

RNAV (GPS) RWY 9

JEROME COUNTY (JER)

RNP APCH.	MISSED APPROACH: (Do not exceed 185K until LAHEW) Climb to 4900 then climbing right turn to 6500 direct LAHEW and hold. # Missed approach requires minimum climb of 300 feet per NM to 5200.
<div><div>▼</div><div>▲</div></div> <div>For uncompensated Baro-VNAV systems, LNAV/VNAV NA below -16°C or above 54°C. Circling NA north of Rwy 9-27.</div>	

ASOS <b>135.225</b>	TWIN FALLS APP CON★ <b>126.7 353.75</b>	UNICOM <b>122.8 (CTAF) 0</b>
------------------------	--	---------------------------------



7 NM Holding Pattern					VGSi and RNAV glidepath not coincident (VGSi Angle 3.00/TCH 40).					4900		6500		LAHEW		ELEV 4053		TDZE 4019	
10000 6500					←266° 086°→					LAHEW		LEZIB 5600		*1.6 NM to PINTO		*LNAV only			
GP 3.00° TCH 45										6 NM		2.4 NM		1.6 NM		1 NM			
CATEGORY		A		B		C		D											
LPV DA #				4544-1½		525 (500-1½)													
LPV DA				4624-1¾		605 (600-1¾)													
LNAV/VNAV DA				4674-1⅞		655 (700-1⅞)													
LNAV MDA		4820-1 801 (800-1)		4820-1¼ 801 (800-1¼)		4820-2½		801 (800-2½)											
CIRCLING		4820-1 767 (800-1)		4820-1¼ 767 (800-1¼)		4820-2½		767 (800-2½)											
										MIRL Rwy 9-27									