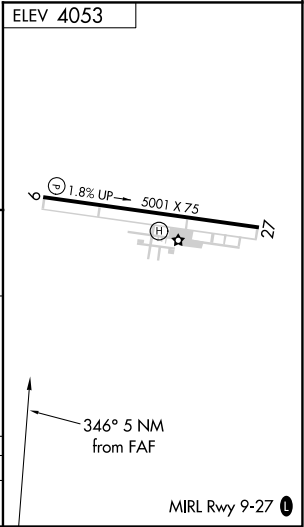
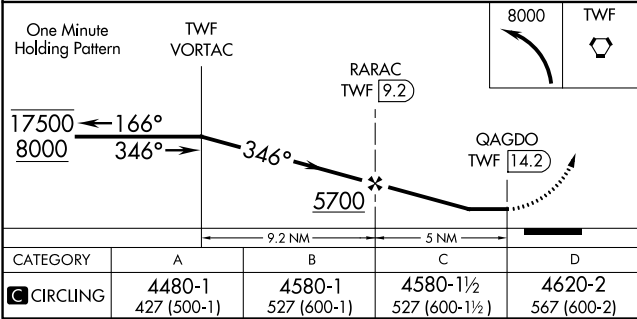
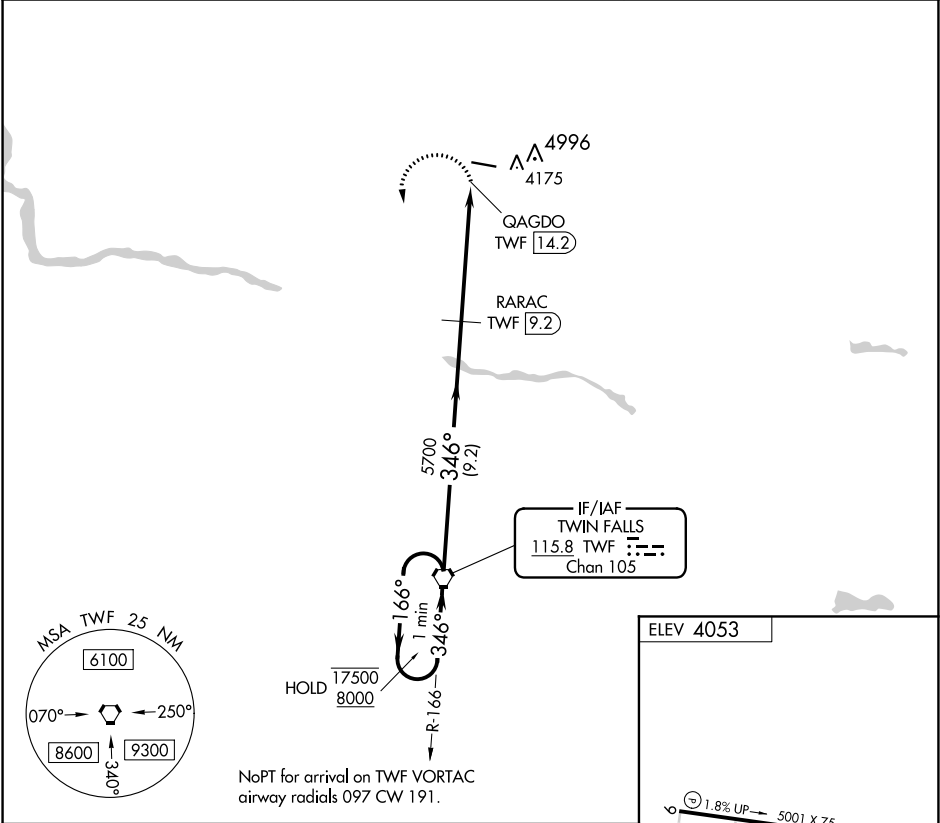


VORTAC TWF 115.8 Chan 105	APP CRS 346°	Rwy Idg TDZE Apt Elev 4053	N/A N/A
---	------------------------	--	--------------------------

VOR-A
JEROME COUNTY (JER)

DME required.	MISSED APPROACH: Climbing left turn to 8000 direct TWF VORTAC and hold, continue climb-in-hold to 8000.
 Circling NA north of Rwy 9-27.	

ASOS 135.225	TWIN FALLS APP CON★ 126.7 353.75	UNICOM 122.8 (CTAF) 0
------------------------	--	---------------------------------



NW-1, 03 DEC 2020 to 31 DEC 2020

NW-1, 03 DEC 2020 to 31 DEC 2020