

APP CRS  
**338°**

Rwy Idg  
**5001**

TDZE  
**3943**

Apt Elev  
**3947**

**RNAV (GPS) RWY 33**

CHOTEAU (CII)

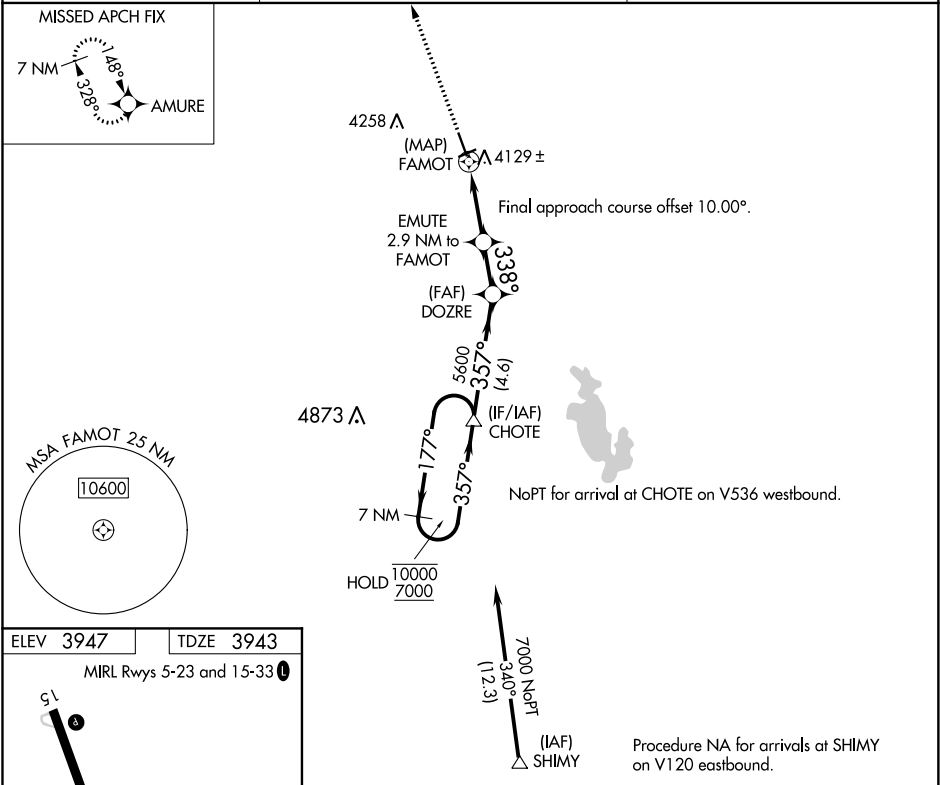
RNP APCH.

NA

Rwy 33 helicopter visibility reduction below ¾ SM NA.

MISSED APPROACH: Climb to 6600 direct to AMURE and hold.

AWOS-2 <b>119.275</b>	SALT LAKE CITY CENTER <b>133.4 285.4</b>	UNICOM <b>122.8 (CTAF) 0</b>
--------------------------	---	---------------------------------



ELEV 3947 TDZE 3943

MIRL Rws 5-23 and 15-33 0

6600 AMURE

EMUTE 2.9 NM to FAMOT

DOZRE

CHOTE Holding Pattern

0.2	1.1 NM	1.8 NM	1.9 NM	4.6 NM
CATEGORY	A	B	C	D
INAV MDA	4380-1	437 (500-1)	4380-1¼	437 (500-1¼)
CIRCLING	4440-1	493 (500-1)	4600-1¾ 653 (700-1¾)	4900-3 953 (1000-3)