

WAAS CH 77905 W23A	APP CRS 234°	Rwy Idg 7300 TDZE 7143 Apt Elev 7143
--	------------------------	---

RNAV (GPS) RWY 23

EVANSTON-UINTA COUNTY BURNS FIELD (EVW)

T For inoperative MALSR, increase LPV all Cats visibility to 1, LNAV/VNAV Cat D to 1 and LNAV Cat D to 1¼. When local altimeter setting not received, procedure NA. For uncompensated Baro-VNAV systems, LNAV/VNAV NA below -29°C (-20°F) or above 34°C (93°F). DME/DME RNP-0.3 NA.

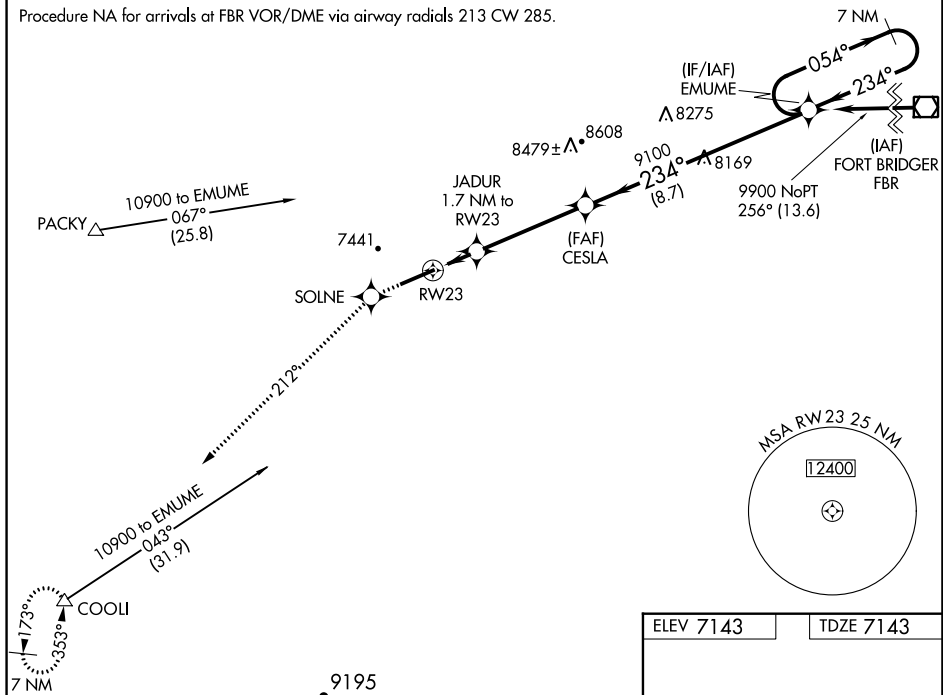
MALSR



MISSED APPROACH: Climb to 12000 direct SOLNE and via 212° track to COOL and hold, continue climb-in-hold to 12000.

ASOS 120.0	SALT LAKE CENTER 127.7 354.125	GCO 121.72	UNICOM 123.0 (CTAF) 0
----------------------	--	----------------------	--

Procedure NA for arrivals at FBR VOR/DME via airway radials 213 CW 285.



CATEGORY	A	B	C	D
LPV DA	7393- $\frac{1}{2}$ 250 (300- $\frac{1}{2}$)			
LNAV/ VNAV DA	7443- $\frac{1}{2}$ 300 (300- $\frac{1}{2}$)			7443- $\frac{3}{4}$ 300 (300- $\frac{3}{4}$)
LNAV MDA	7520- $\frac{1}{2}$ 377 (400- $\frac{1}{2}$)			7520-1 377 (400-1)
CIRCLING	7580-1 437 (500-1)	7720-1 577 (600-1)	7760-1 $\frac{3}{4}$ 617 (700-1 $\frac{3}{4}$)	7760-2 617 (700-2)

