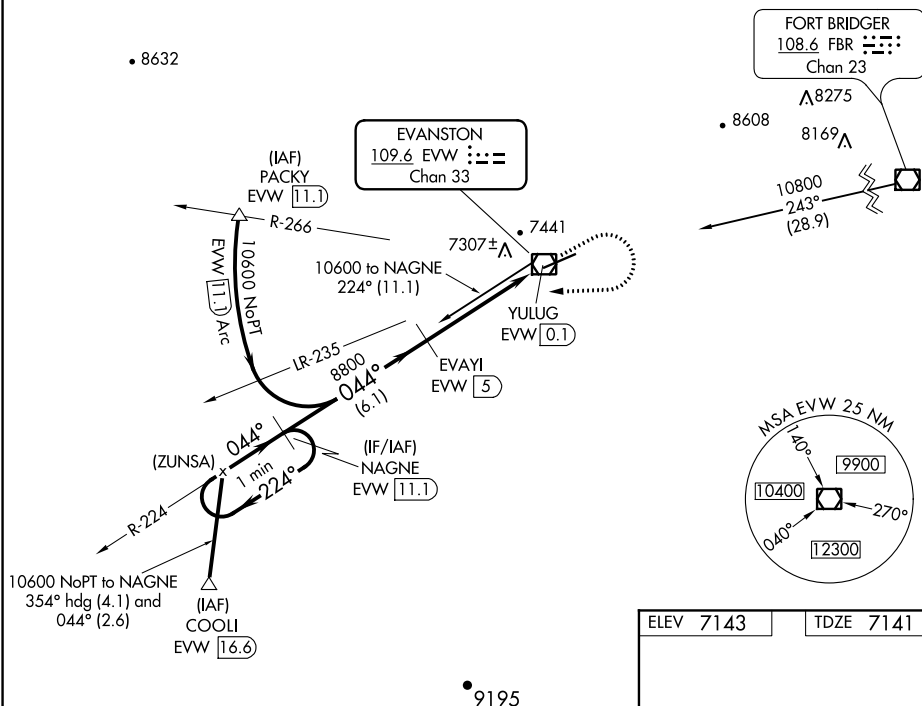


EVANSTON-UINTA COUNTY BURNS FIELD (EVW)

**MISSED APPROACH:** Climb to 7600, then climbing right turn to 10600 via heading 255° and EVW VOR/DME R-224 to NAGNE/11.1 DME and hold. continue climb-in-hold to 10600.

• 8632



NW-1, 03 DEC 2020 to 31 DEC 2020

Diagram illustrating the runway layout for Runway 5. The runway is labeled 7300 X 100. The diagram shows the runway's orientation (044° 5 NM from FAF) and the elevation (ELEV 7143) and TDZE (7141). The diagram also includes symbols for the runway's width (100) and the runway's length (7300).