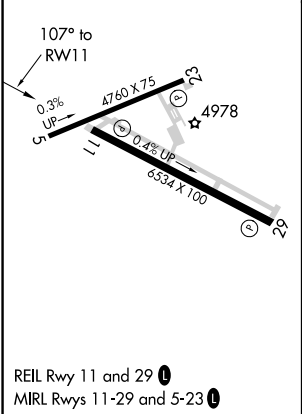
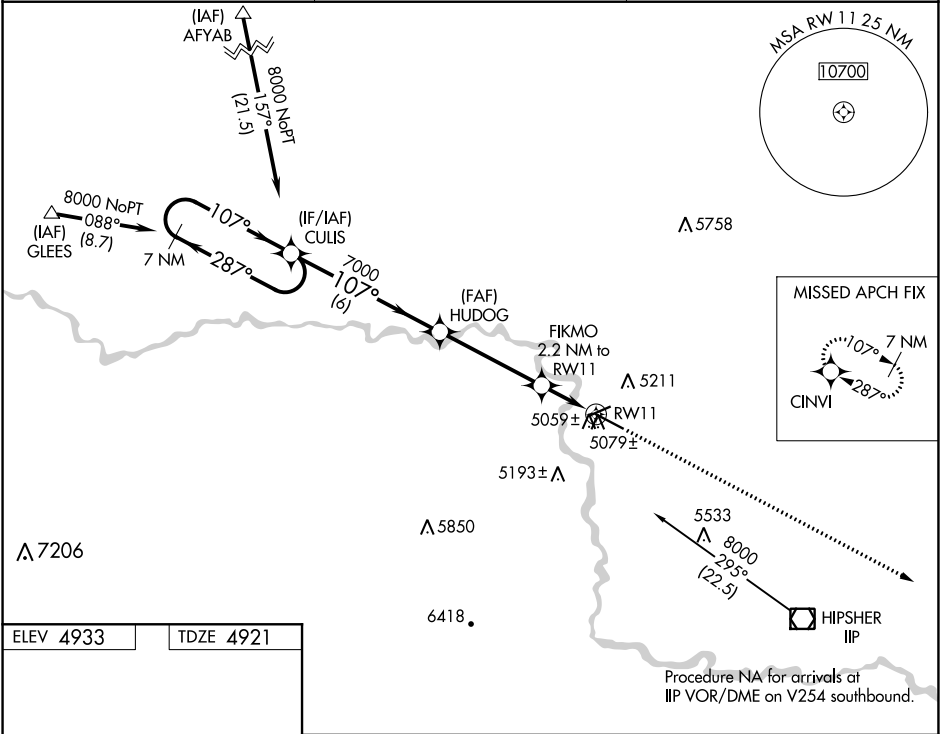


WAAS CH <b>58018</b> <b>W11A</b>	APP CRS <b>107°</b>	Rwy Idg TDZE Apt Elev <b>6534</b> <b>4921</b> <b>4933</b>
--	------------------------	--

RNAV (GPS) RWY 11  
CONVERSE COUNTY (DGW)

RNP APCH. ▼ For uncompensated Baro-VNAV systems, LNAV/VNAV NA below -24°C (-11°F) or above 39°C (102°F).	MISSED APPROACH: Climb to 8000 direct CINVI and hold.
--	---

ASOS <b>135.225</b>	DENVER CENTER <b>135.6 363.025</b>	UNICOM <b>122.8 (CTAF) 0</b>
------------------------	---------------------------------------	---------------------------------



--	--

NW-1, 03 DEC 2020 to 31 DEC 2020

NW-1, 03 DEC 2020 to 31 DEC 2020