

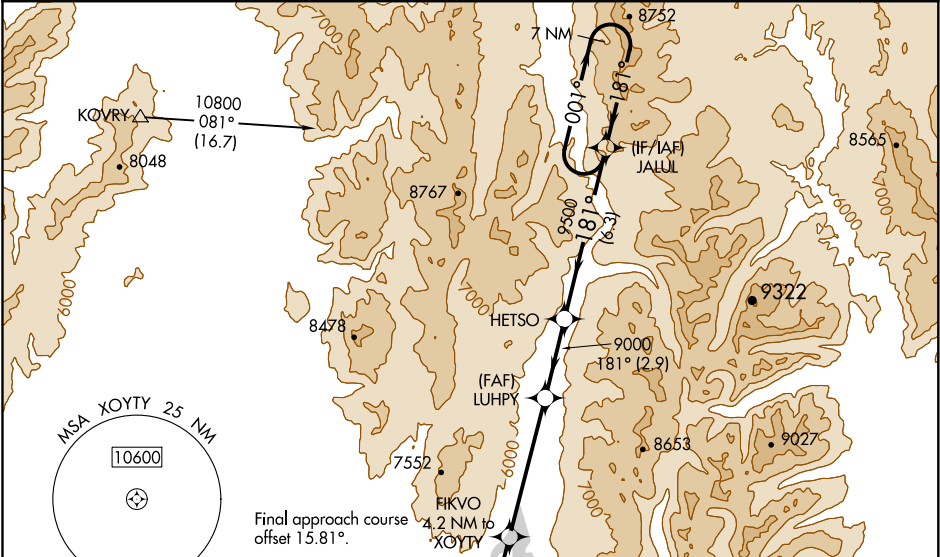
APP CRS	Rwy Idg	6108
	TDZE	5024
181°	Apt Elev	5024

RNAV (GPS) RWY 16

MC CALL MUNI (MYL)

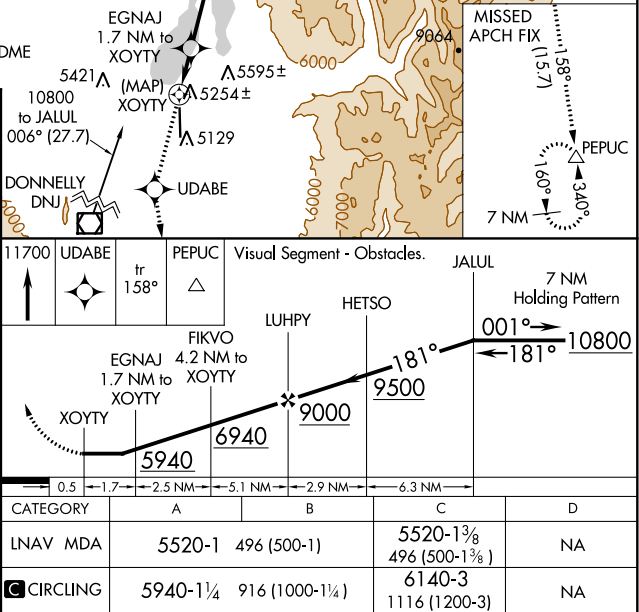
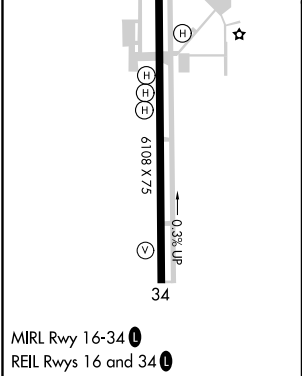
Rwy 16 helicopter visibility reduction below 1 SM NA. DME/DME RNP-0.3 NA. -20°C Straight-in Rwy 16 NA at night, Circling Rwy 16 NA at night.	MISSED APPROACH: Climb to 11700 direct UDABE and on track 158° to PEPUC and hold, continue climb-in-hold to 11700.
--	--

ASOS 119.925	SALT LAKE CENTER 128.05 306.95	UNICOM 122.8 (CTAF)
------------------------	--	-------------------------------



Procedure NA for arrival on DNJ VOR/DME airway radials 325 CW 083.

ELEV 5024	TDZE 5024
-----------	-----------



NW-1, 03 DEC 2020 to 31 DEC 2020

NW-1, 03 DEC 2020 to 31 DEC 2020