

APP CRS	Rwy Idg	6100
183°	TDZE	2211
	Apt Elev	2211

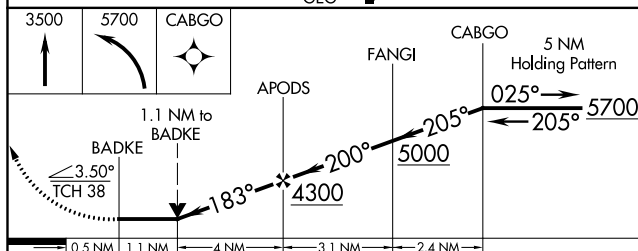
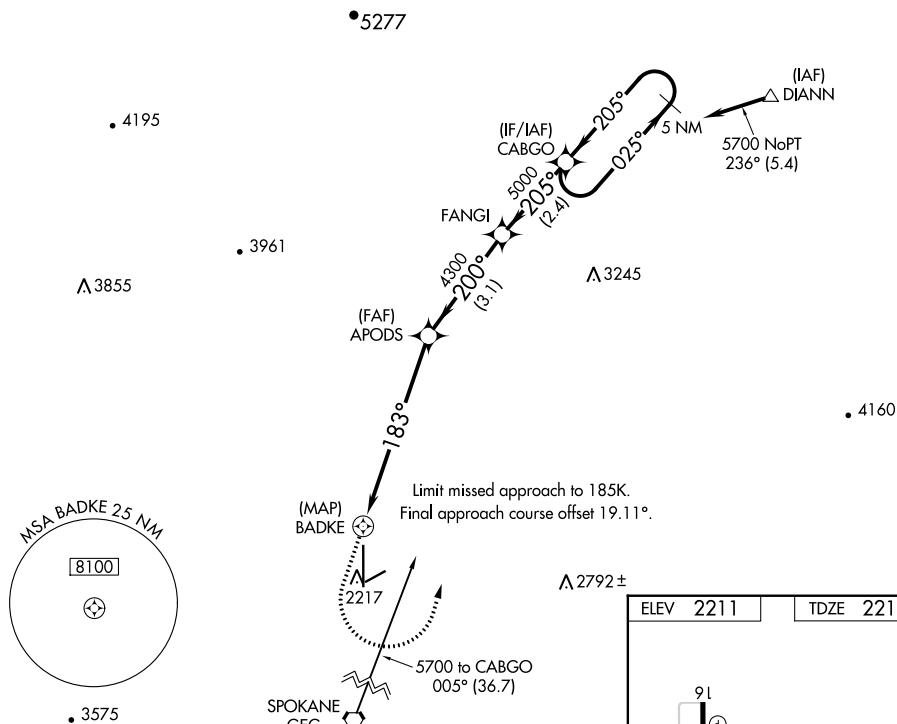
RNAV (GPS) RWY 16
DEER PARK (DEW)


T When local altimeter setting not received, procedure NA.
DME/DME RNP-0.3 NA.
Helicopter visibility reduction below $\frac{3}{4}$ SM NA.
Circling NA west of Rwy 16-34.

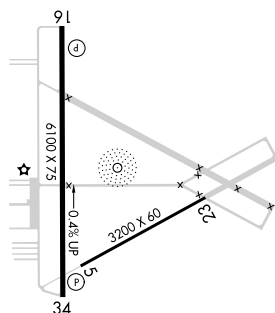
MISSED APPROACH: Climb to 3500 then climbing left turn to 5700 direct CABGO and hold.

ASOS
135.175

SPOKANE APP CON
123.75 282.25

UNICOM
123.0 (CTAF) 

CATEGORY	A	B	C	D
LNNAV MDA	2640-1 429 (500-1)		2640-1 $\frac{1}{4}$	429 (500-1 $\frac{1}{4}$)
 CIRCLING	2700-1 489 (500-1)		2700-1 $\frac{1}{2}$ 489 (500-1 $\frac{1}{2}$)	2860-2 649 (700-2)

REIL Rwy 16 and 34 **L**MIRL Rwy 16-34 **L**