

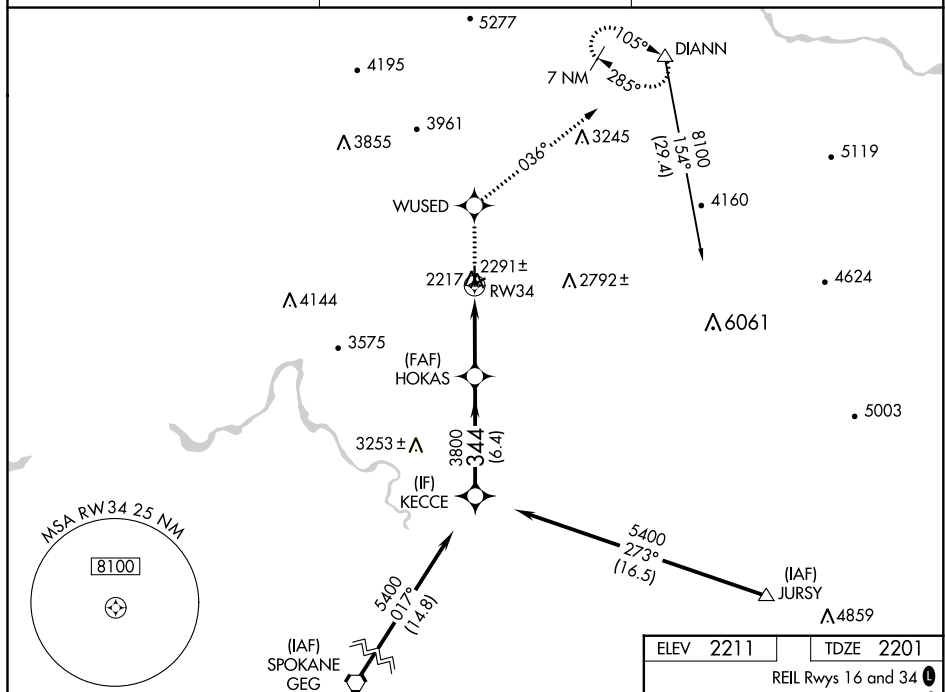
WAAS CH 61306 W34A	APP CRS 344°	Rwy Idg 6100 TDZE 2201 Apt Elev 2211
--	------------------------	---

RNAV (GPS) RWY 34
DEER PARK (DEW)

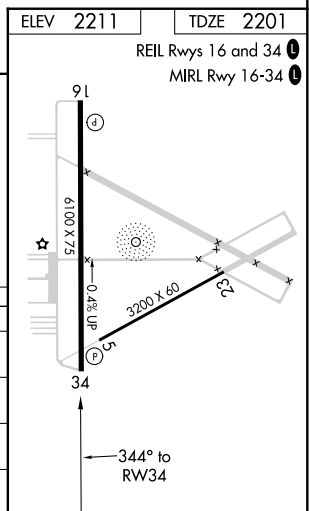
T For uncompensated Baro-VNAV systems, LNAV/VNAV NA below -19°C (-2°F) or above 44°C (111°F). When local altimeter setting not received, use Spokane Intl altimeter setting and increase all DA/MDA 80 feet and all visibilities ¼ SM. Circling NA west of Rwy 16-34. DME/DME RNP: 0.3 NA. VDP and Baro-VNAV NA when using Spokane Intl altimeter setting.

MISSED APPROACH: Climb to 8100 direct WUSED and via 036° track to DIANN and hold, continue climb-in-hold to 8100.

ASOS 135.175	SPOKANE APP CON 123.75 282.25	UNICOM 123.0 (CTAF) 0
------------------------	---	---------------------------------



8100 ↑		WUSED ✱		036° tr		DIANN △		HOKAS		KECCE	
*LNAV only		*1.2 NM to RW34		RW34		1.2		3.7 NM		6.4 NM	
3800		344°		5400		Procedure Turn NA		GP 3.00°		TCH 40	
CATEGORY		A		B		C		D			
LPV DA		2466-1		265 (300-1)							
LNAV/VNAV DA		2551-1¼		350 (400-1¼)							
LNAV MDA		2600-1		399 (400-1)						2600-1¼ 399 (400-1¼)	
CIRCLING		2700-1		489 (500-1)		2700-1½ 489 (500-1½)		2860-2 649 (700-2)			



RNAV (GPS) RWY 34