

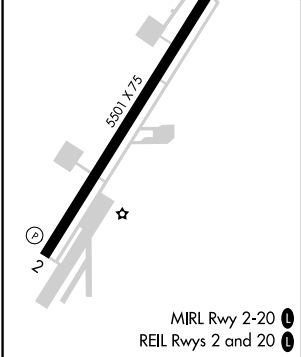
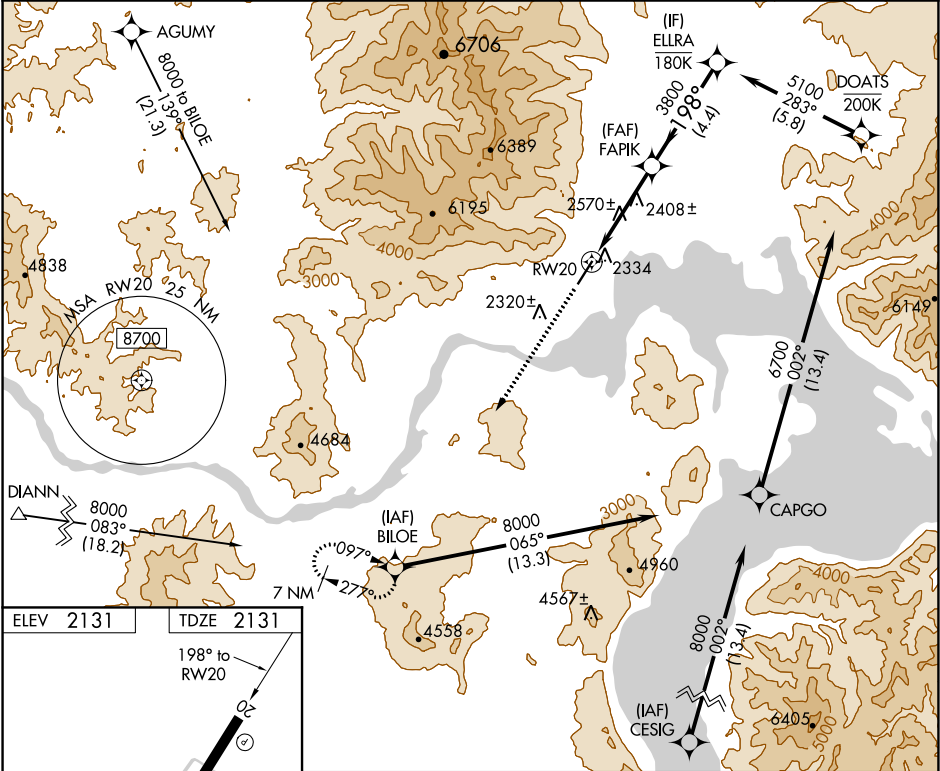
APP CRS	Rwy Idg	5501
198°	TDZE	2131
	Apt Elev	2131

# RNAV (GPS) Y RWY 20

SANDPOINT (SZT')

RNP APCH.	MISSED APPROACH: Climb to 6600 direct BILOE and hold, continue climb in hold to 6600.
<p>⚠ Circling NA west of Rwy 2-20. Rwy 20 helicopter visibility reduction below ¾ SM NA. VDP NA with Deer Park altimeter setting. When local altimeter not received, use Deer Park altimeter setting and increase all MDA 120 feet.</p>	

AWOS-3 135.425	SEATTLE CENTER 123.95 290.55	UNICOM 122.7 (CTAF) ①
-------------------	---------------------------------	--------------------------



6600	BILOE	VGS1 and descent angles not coincident (VGS1 Angle 3.75/TCH 50).			ELLRA
		3.1 NM to RWY 20			5100
		3.77° TCH 55			3800
		3.1 NM	0.9 NM	4.4 NM	
CATEGORY	A	B	C	D	
LNAV MDA	3400-1¼ 1269 (1300-1¼)	3400-1½ 1269 (1300-1½)	3400-3 1269 (1300-3)	NA	
CIRCLING	3400-1¼ 1269 (1300-1¼)	3400-1½ 1269 (1300-1½)	3400-3 1269 (1300-3)	NA	