

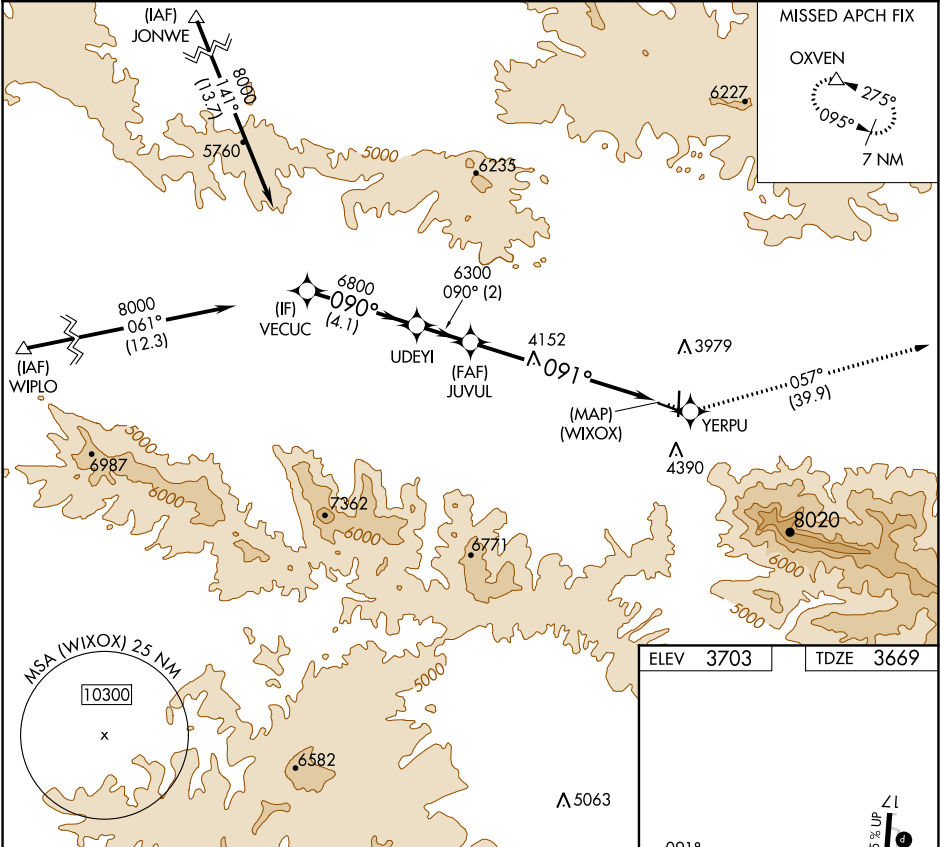
WAAS CH 73010 W09A	APP CRS 091°	Rwy Idg TDZE 3669 Apt Elev 3703
--	------------------------	---

RNAV (GPS) Z RWY 9

GRANT COUNTY RGNL/OGILVIE FIELD (GCD)

When local altimeter setting not received, procedure NA. DME/DME RNP-0.3 NA. Helicopter visibility reduction below 3/4 SM NA.	MISSED APPROACH: Climb to 12000 direct YERPU and on track 057° to OXVEN and hold, continue climb-in-hold to 12000.
---	--

AWOS-3 118.375	SEATTLE CENTER 128.15 257.75	UNICOM 122.8 (CTAF) 0
--------------------------	--	---------------------------------



VEUCUC		UDEYI		JUVUL		12000 ↑		YERPU ✧		tr 057°		OXVEN △	
8000		6800		6300		VGSI and RNAV glidepath not coincident (VGSI Angle 3.00/TCH 45)							
GP 3.40° TCH 54				(WIXOX)									
4.1 NM		2 NM		7.1 NM									
CATEGORY		A		B		C		D					
LPV DA		4269-2 600 (600-2)						NA					
REIL Rwy 17 and 9 0 MIRL Rwy 9-27 and 17-35 0													