

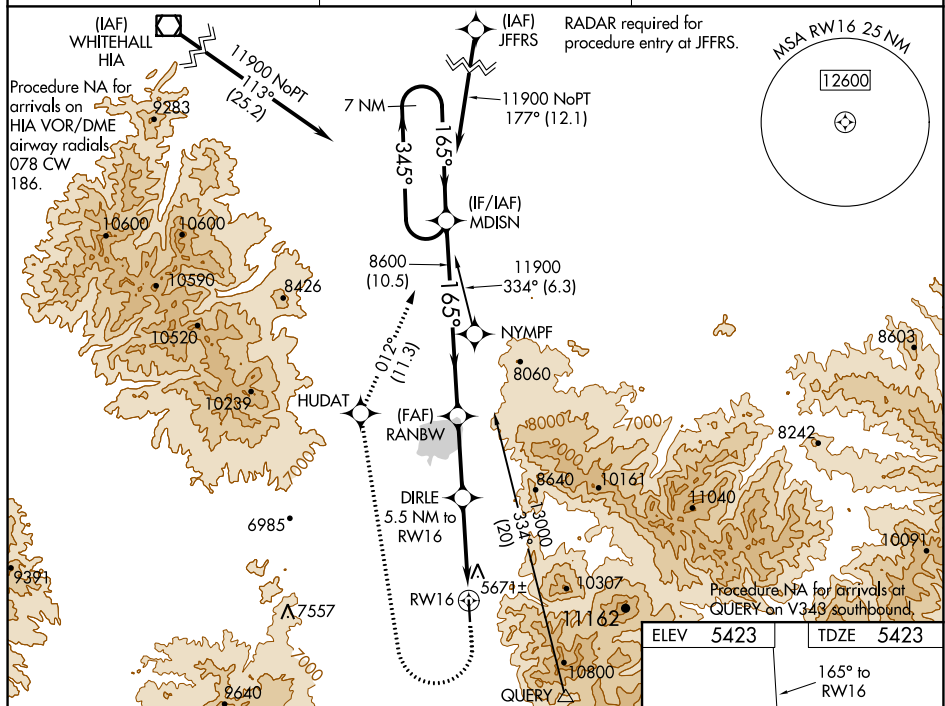
WAAS CH <b>65735</b> <b>W16A</b>	APP CRS <b>165°</b>	Rwy Idg <b>6601</b> TDZE <b>5423</b> Apt Elev <b>5423</b>
--	------------------------	---

RNAV (GPS) RWY 16  
ENNIS-BIG SKY (EKS)

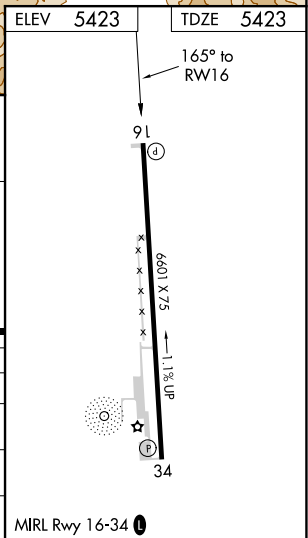
**T** For uncompensated Baro-VNAV systems, LNAV/VNAV  
**A** NA below -25°C (-13°F) or above 53°C (127°F). Circling  
NA east of Rwy 16 and 34. DME/DME RNP-0.3 NA.  
Limit missed approach to 185K until MDJIN.

**MISSED APPROACH:** Climb to 6400 then climbing right turn to 11900 direct HUDAT and on track 012° to MDISN and hold, continue climb-in-hold to 11900.

AWOS-3P <b>119.85</b>	BIG SKY APP CON ★ <b>118.975 226.675</b>	UNICOM <b>122.8 (CTAF) ①</b>
--------------------------	---	---------------------------------



VGSI and RNAV glidepath not coincident (VGSI Angle 3.00/TCH 25).				
7 NM Holding Pattern		MDISN		
11900 ← 345° 165° →		*RNAV only		
GP 3.00° TCH 40		RANBW 8600 DIRLE 5.5 NM to RW16 *2.1 NM to RW16 *7200		
		10.5 NM    4.4 NM    3.4 NM    2.1 NM		
CATEGORY	A	B	C	D
LPV DA	5698-1 275 (300-1)			
RNAV/ VNAV DA	6183-3 760 (800-3)			
RNAV MDA	6100-1 677 (700-1)		6100-1 $\frac{7}{8}$ 677 (700-1 $\frac{7}{8}$ )	
<b>C</b> CIRCLING	6100-1 677 (700-1)		6100-2 677 (800-2)	6100-2 $\frac{1}{4}$ 677 (800-2 $\frac{1}{4}$ )



RNAV (GPS) RWY 16