

APP CRS	Rwy Idg	5510
175°	TDZE	4041
	Apt Elev	4044

RNAV (GPS) RWY 17

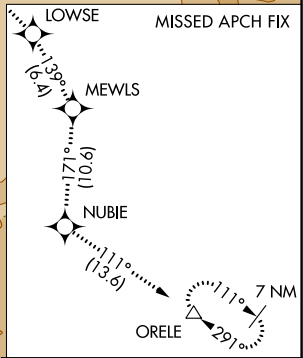
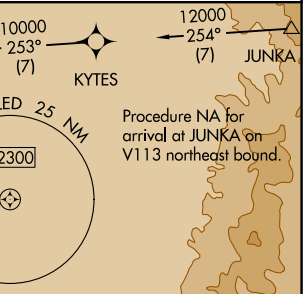
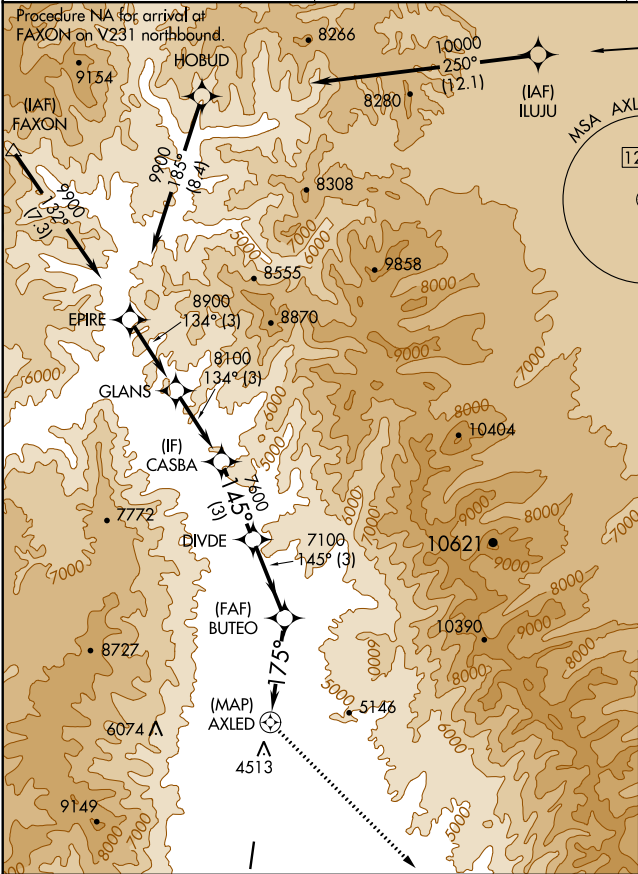
LEMHI COUNTY (SMN)

NA
-13°C

DME/DME RNP-0.3 NA. Night landing: Rwy 35 NA.
Circling NA for Cats B and C east of Rwy 17-35.
Helicopter visibility reduction below 3/4 SM NA.

MISSED APPROACH: Climb to 13600 direct LOWSE and track 139° to MEWLS and track 171° to NUBIE and track 111° to ORELE and hold, continue climb-in-hold to 13600.

AWOS-3PT 135.075	SALT LAKE CENTER 132.4 338.3	UNICOM 122.8 (CTAF) 0
---------------------	---------------------------------	--------------------------



ELEV 4044	TDZE 4041
-----------	-----------

CASBA	DIVDE	BUTOE	LOWSE	MEWLS
8100	7600	7100	13600	
145°	3.50°	175°	139°	
3 NM	3 NM	3.8 NM	4.3 NM	
CATEGORY	A	B	C	D
LNAB MDA	5740-5	1699 (1700-5)		NA
CIRCLING	5740-5	1696 (1700-5)	6180-5 2136 (2200-5)	NA

