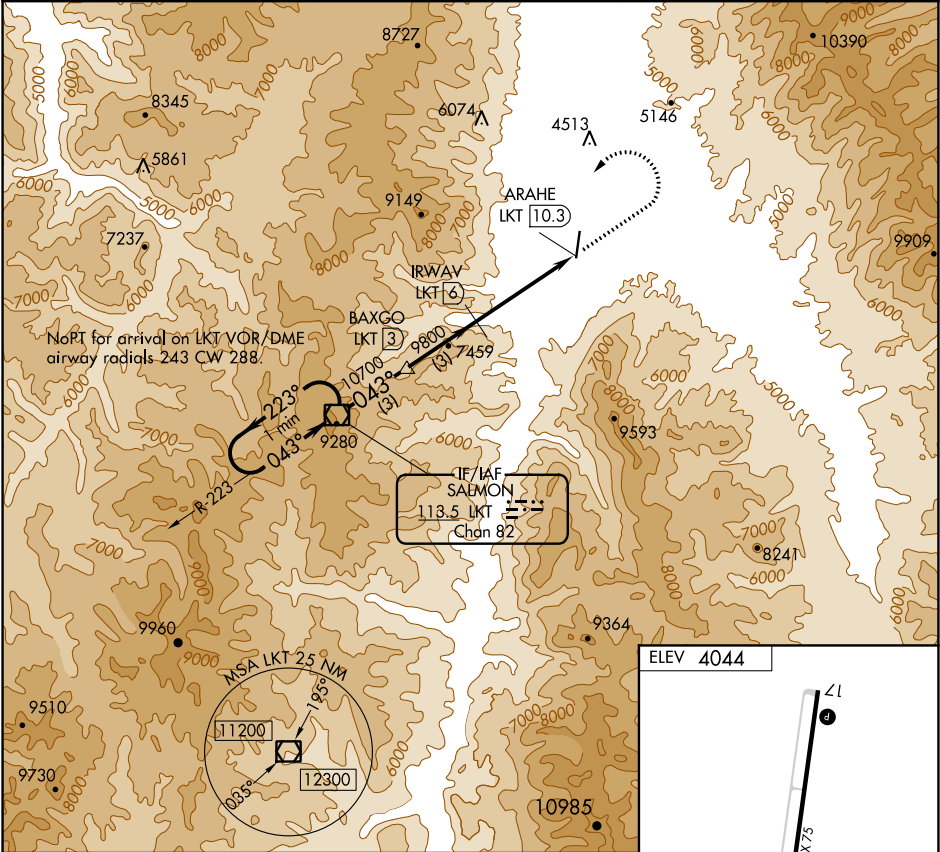


VOR/DME LKT	APP CRS	Rwy Idg TDZE	N/A
113.5	043°	Apt Elev	N/A
Chan 82			4044

VOR/DME-B
LEMHI COUNTY (SMN)

<p>NA</p> <p>-13°C</p>	<p>Circling NA for Cat C east of Rwy 17-35.</p> <p>Night Landing: Rwy 35 NA.</p>	<p>MISSED APPROACH: Climb to 8900 then climbing left turn to 11600 direct LKT VOR/DME and hold, continue climb-in-hold to 11600.</p>
------------------------	--	--

AWOS-3PT 135.075	SALT LAKE CENTER 132.4 338.3	UNICOM 122.8 (CTAF) 0
---------------------	---------------------------------	--------------------------



One Minute Holding Pattern		LKT VOR/DME	BAXGO LKT 3	IRWAV LKT 6	ARAHE LKT 10.3	8900	11600	LKT
11600		223°	043°	10700	9800			
		3 NM	3 NM	4.3 NM				
CATEGORY	A	B	C	D				
CIRCLING	8100-1¼ 4056 (4100-1¼)	8100-1½ 4056 (4100-1½)	8100-3 4056 (4100-3)	NA				

REIL Rws 17 and 35 0

MIRL Rwy 17-35 0