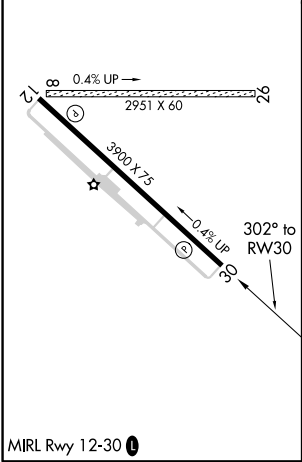
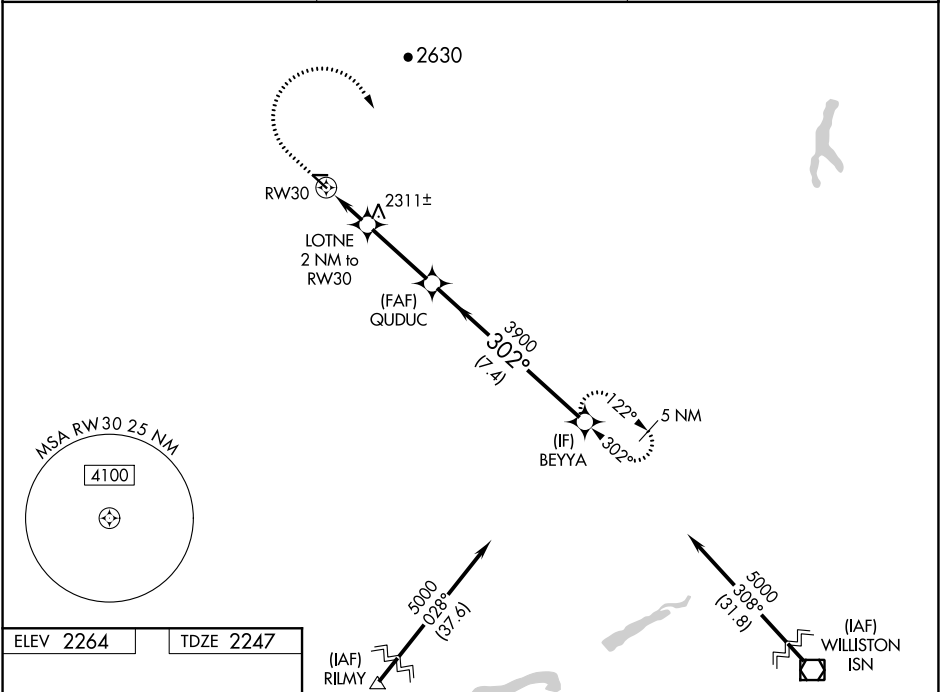







WAAS CH 50529 W30A	APP CRS 302°	Rwy Idg 3900 TDZE 2247 Apt Elev 2264
--	------------------------	--

RNAV (GPS) RWY 30

SHER-WOOD (PWD)

RNP APCH. ⚠ Circling Rwy 8, 26 NA at night. For uncompensated Baro-VNAV systems, LNAV/VNAV NA below -19°C or above 54°C. When local altimeter setting not received, use Williston altimeter setting.		MISSED APPROACH: Climb to 2900 then climbing right turn to 5000 direct BEYYA and hold.
AWOS-3 135.025	SALT LAKE CENTER 126.85 305.2	UNICOM 122.8 (CTAF) 0



2900		5000		BEYYA		BEYYA	
							
*LNAV only		LOTNE 2 NM to RW30		QUDUC 3900		5000	
		1.3 NM to RW30		3900		302°	
1.3 NM		0.7 NM		2900*		GP 3.00° TCH 34	
1.3 NM		0.7 NM		3.1 NM		7.4 NM	
CATEGORY	A		B		C		D
LPV DA	2562-¾		315 (300-¾)				
LNAV/ VNAV DA	2612-1		365 (400-1)				
LNAV MDA	2680-1	433 (500-1)		2680-1¼	433 (500-1¼)		
 CIRCLING	2780-1	516 (600-1)		2880-1¾ 616 (700-1¾)	3100-2¾ 836 (900-2¾)		