

WAAS CH 40038 W16A	APP CRS 193°	Rwy Idg 2901 TDZE 35 Apt Elev 35
--	------------------------	---

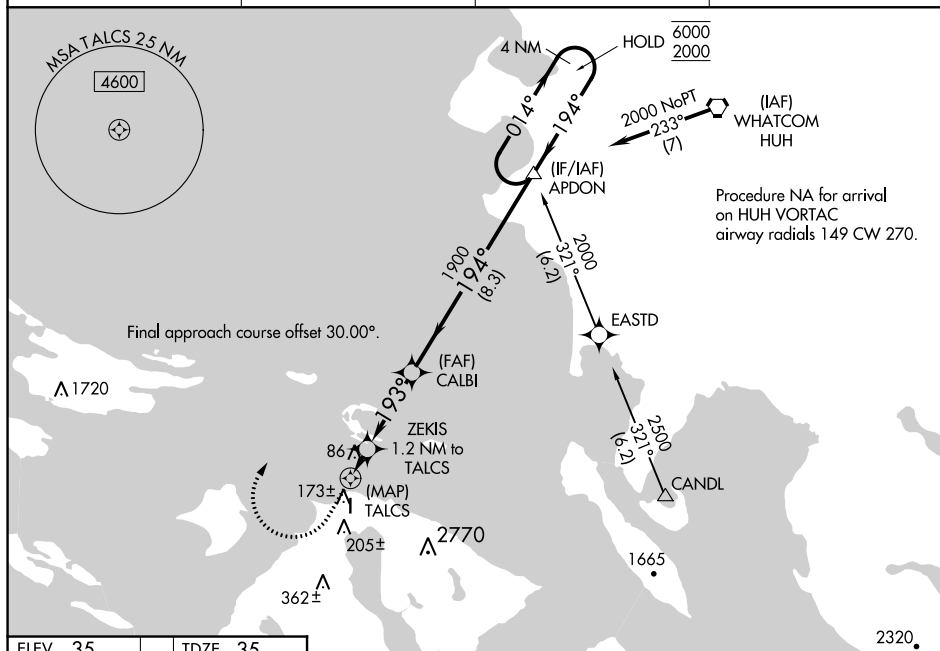
RNAV (GPS) RWY 16
ORCAS ISLAND (ORS)

RNP APCH.

- T** Circling to Rwy 34 NA at night. Rwy 16 helicopter visibility reduction
A below $\frac{3}{4}$ SM NA. When local altimeter setting not received,
use Friday Harbor altimeter setting and increase all MDA 40 feet.

MISSED APPROACH: Climb to 440 then climbing right turn to 2000 direct APDON and hold.
Missed approach requires minimum climb of 385 feet per NM to 980.

AWOS-3 135.425	WHIDBEY APP CON 118.2 285.65 (SOUTH)	VICTORIA APP CON 132.7 290.8 (NORTH)	CTAF 128.250
--------------------------	--	--	------------------------



ELEV 35		TDZE 35
---------	--	---------

