

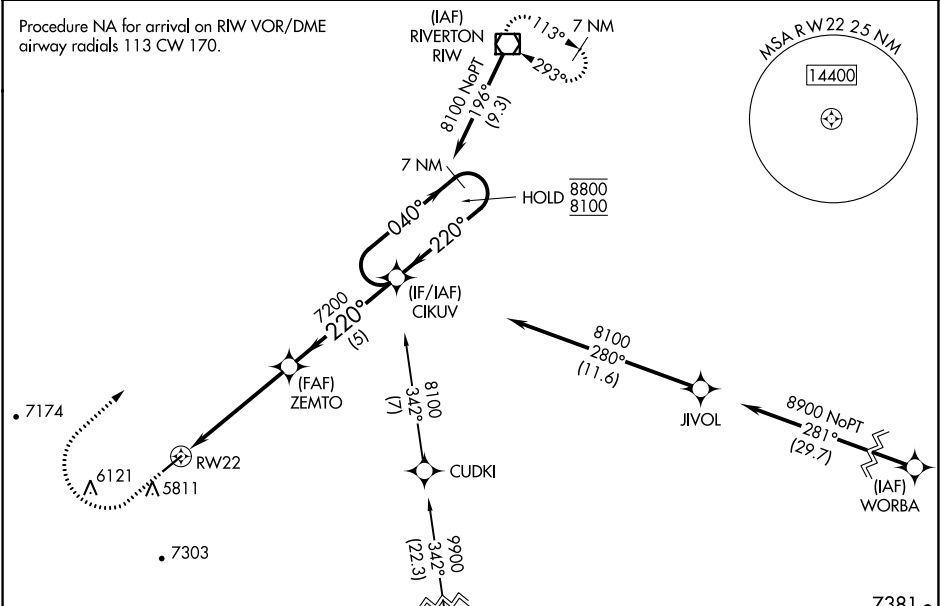
WAAS CH <b>50343</b> <b>W22A</b>	APP CRS <b>220°</b>	Rwy Idg TDZE Apt Elev	<b>5000</b> <b>5577</b> <b>5589</b>
--	------------------------	-----------------------------	---

RNAV (GPS) RWY 22

HUNT FIELD (LND)

RNP APCH. CIRCLING NA southeast of Rwy 4 and 22. Circling Rwy 4 NA at night. Rwy 22 helicopter visibility reduction below ¾ SM NA. For uncompensated Baro-VNAV systems, LNAV/VNAV NA below -26°C or above 54°C.	MISSED APPROACH: (Do not exceed 165K until R/W VOR/DME) Climb to 6280 then climbing right turn to 8200 direct R/W VOR/DME and hold. #Missed approach requires minimum climb of 355 feet per NM to 6700.
--	---

ASOS <b>118.15</b>	SALT LAKE CENTER <b>133.25 285.6</b>	UNICOM <b>122.8 (CTAF) 0</b>
-----------------------	---	---------------------------------



ELEV 5589	TDZE 5577
-----------	-----------

	6280	8200	RW	CIKUV		7 NM Holding Pattern	
	*LNAV only		*2.9 NM to RW22		7200		8800
	RW22		ZEMTO		7200		8100
	2.9 NM		2.1 NM		5 NM		GP 3.00°
	220° to RW22		040°		220°		TCH 41
CATEGORY		A		B		C	
LPV DA#		5827-¾		250 (300-¾)		NA	
LPV DA		6060-1⅜		483 (500-1⅜)		NA	
LNAV/VNAV DA		6040-1⅜		463 (500-1⅜)		NA	
LNAV MDA		6460-1¼		883 (900-1¼)		6460-2½ 883 (900-2½)	
CIRCLING		6460-1¼		871 (900-1¼)		6540-3 951 (1000-3)	