

WAAS  
CH **99443**  
**W09A**

APP CRS  
**088°**

Rwy Idg  
TDZE **4312**  
Apt Elev **4312**

**RNAV (GPS) RWY 9**

WHEATLAND COUNTY AT HARLOWTON (HWQ)

RNP APCH.

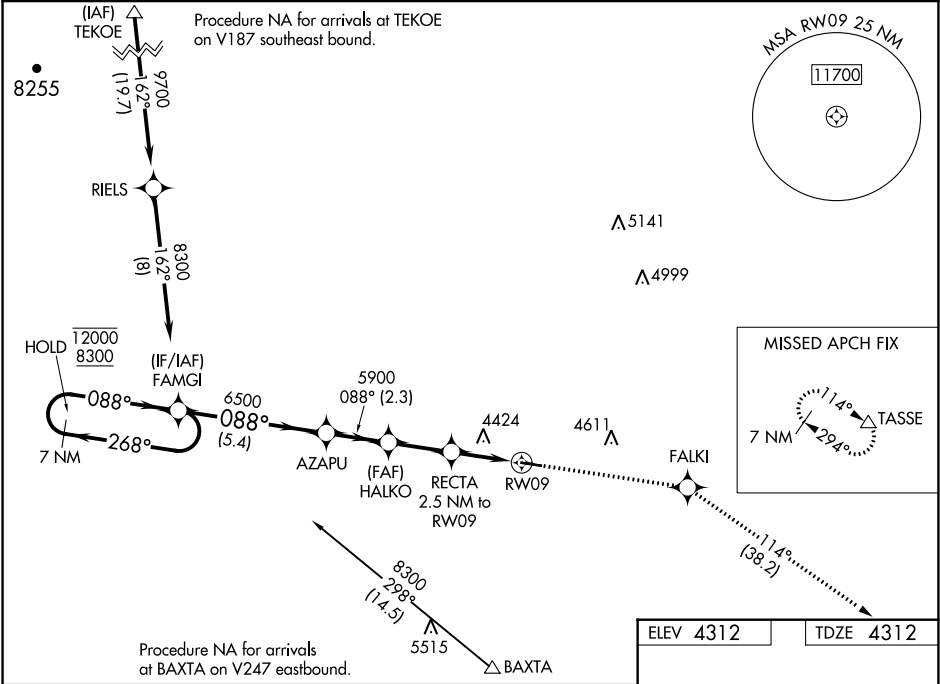
▼

NA

Rwy 9 helicopter visibility reduction below 1 SM NA. Baro-VNAV NA. Use Lewistown altimeter setting. Straight-in Rwy 9 NA at night, Circling Rwy 9 NA at night.

MISSED APPROACH: Climb to 8000 direct FALKI and on track 114° to TASSE and hold.

LWT ASOS <b>118.375</b>	SALT LAKE CENTER <b>127.75 351.9</b>	CTAF <b>122.90</b>
----------------------------	---	-----------------------



7 NM Holding Pattern

FAMGI

AZAPU

HALKO

RECTA 2.5 NM to RW09

RW09

TASSE

12000

8300

GP 3.00°

TCH 55

268°

088°

088°

6500

5900

5160

4200 X 60

1.2% UP

CATEGORY

A

B

C

D

LPV DA

4673-1

361 (400-1)

NA

LNNAV/VNAV DA

4673-1

361 (400-1)

NA

LNNAV MDA

4800-1

488 (500-1)

NA

CIRCLING

4940-1

628 (700-1)

5000-1

688 (700-1)

NA

MRL Rwy 9-27