

APP CRS	Rwy Idg	6370
066°	TDZE	4882
	Apt Elev	4892

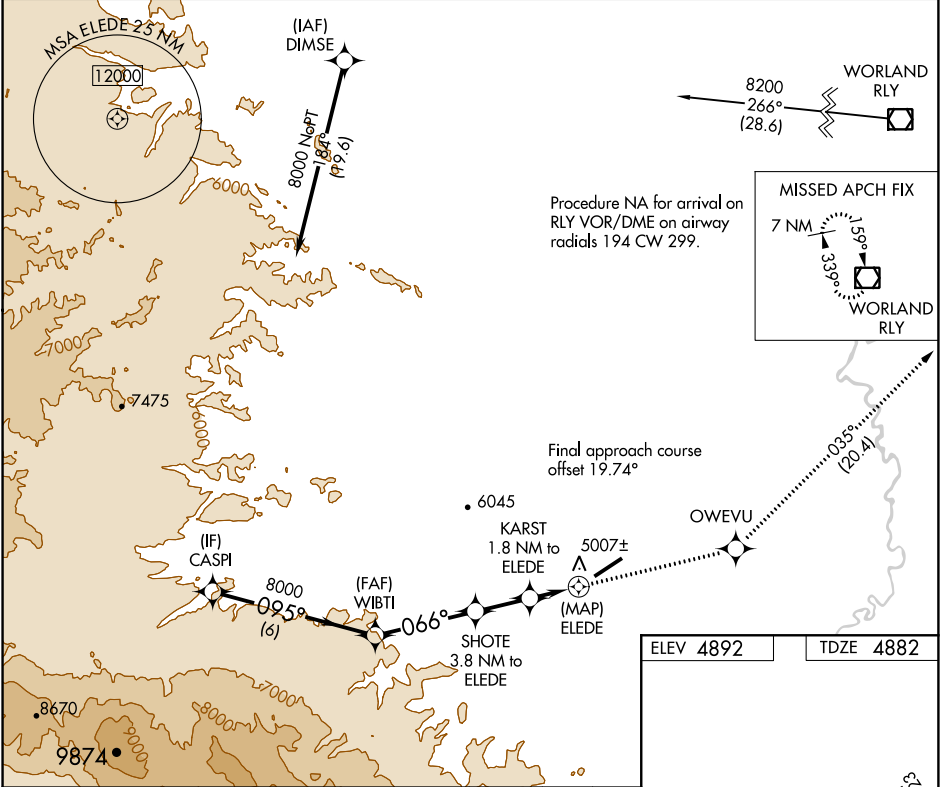
RNAV (GPS) RWY 5

HOT SPRINGS COUNTY (HSG)

Circling NA northwest of Rwy 5-23.  
 DME/DME RNP-0.3 NA.  
 Rwy 5 helicopter visibility reduction below ¾ SM NA.

MISSED APPROACH: Climb to 8200 direct OWEVU and on track 035° to RLY VOR/DME and hold.

AWOS-3PT 121.125	SALT LAKE CENTER 133.25 285.6	UNICOM 122.8 (CTAF)
---------------------	----------------------------------	------------------------



VGSI and descent angles not coincident (VGSI Angle 2.75/TCH 39).		8200	OWEVU	tr 035°	RLY
CASPI	WIBTI	SHOTE	KARST	ELEDE	
8000	8000	6620	5860		
6 NM	3.7 NM	2 NM	1.8 NM	0.7 NM	
CATEGORY	A	B	C	D	
LNNAV MDA	5240-1	358 (400-1)		NA	
CIRCLING	5320-1 428 (500-1)	5540-1 648 (700-1)	5580-2 688 (700-2)	5880-3 988 (1000-2)	REIL Rwys 5 and 23 MIRL Rwy 5-23