

(KEOLA2.KEOLA) 20030
KEOLA TWO DEPARTURE

DANIEL K INOUE INTL (HNL) (PHNL)
AL-754 (FAA) HONOLULU, HAWAII

D-ATIS
127.9 251.15
CINC DEL
121.4 281.4
GND CON
121.9 348.6
HONOLULU TOWER
118.1 257.8
123.9 273.575 (Rwy 8R/26L)
HCF APPROACH
118.3 269.0



DEPARTURE ROUTE DESCRIPTION

Turn right/left to heading assigned by the Tower, expect vectors to KEOLA INT, maintain 5000'; then via transitions. Expect clearance to enroute altitude/flight level at KEOLA INT.

KATHS TRANSITION (KEOLA2.KATHS): From over KEOLA via HNL R-258 and SOK R-234 to KATHS INT.

LIHUE TRANSITION (KEOLA2.LIHUE): From over KEOLA via SOK R-111 and LIH R-148 to LIH VORTAC.

LIILIA TRANSITION (KEOLA2.LIILIA): From over KEOLA via RNAV course 282° to LIILIA WP.

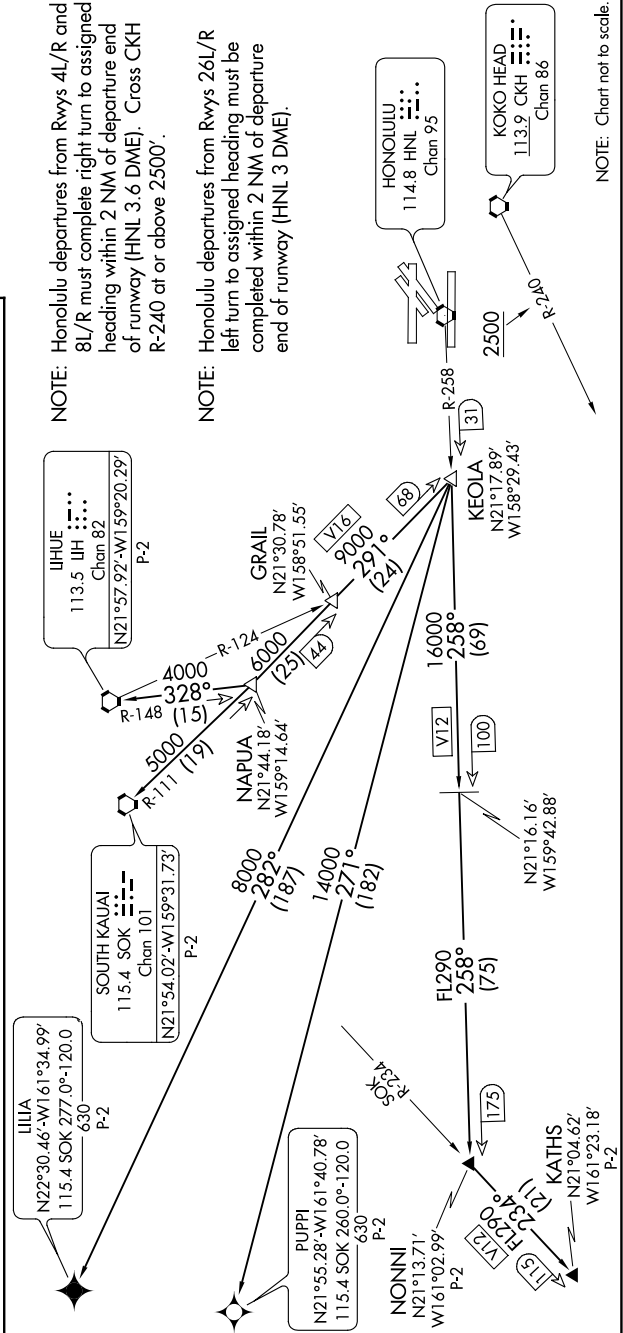
NONNI TRANSITION (KEOLA2.NONNI): From over KEOLA via HNL R-258 to NONNI INT.

PUPPI TRANSITION (KEOLA2.PUPPI): From over KEOLA via RNAV course 271° to PUPPI WP.

SOUTH KAUAI TRANSITION (KEOLA2.SOK): From over KEOLA via SOK R-111 to SOK VORTAC.

NOTE: Honolulu departures from Rwys 4L/R and 8L/R must complete right turn to assigned heading within 2 NM of departure end of runway (HNL 3.6 DME). Cross CKH R-240 at or above 2500'.

NOTE: Honolulu departures from Rwys 26L/R left turn to assigned heading must be completed within 2 NM of departure end of runway (HNL 3 DME).



KEOLA TWO DEPARTURE
(KEOLA2.KEOLA) 06JAN94

HONOLULU, HAWAII
DANIEL K INOUE INTL (HNL) (PHNL)