

(BLUSH2.BLUSH) 18312  
BLUSH TWO DEPARTURE

AL-759 (FAA)

MOLOKAI (MKK) (PHMK)  
KAUNAKAKAI, HAWAII

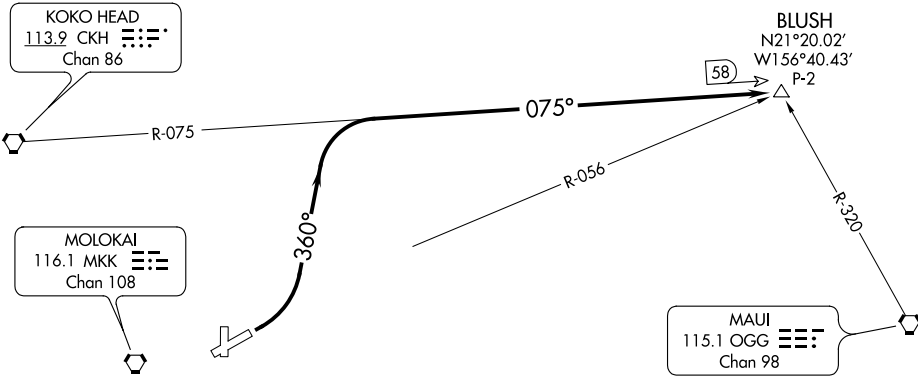
ATIS  
128.2  
GND CON  
121.9  
MOLOKAI TOWER ★  
125.7 306.2  
HCF CENTER  
124.1 317.5

KOKO HEAD  
113.9 CKH  
Chan 86

MOLOKAI  
116.1 MKK  
Chan 108

BLUSH  
N21°20.02'  
W156°40.43'  
P-2

MAUI  
115.1 OGG  
Chan 98



TAKEOFF MINIMUMS

Rwy 17, 23, 35: NA-ATC.  
Rwy 5: 300-1 with minimum climb of 325' per NM to 1500 or  
standard with minimum climb of 540' per NM to 800.

NOTE: Chart not to scale.



DEPARTURE ROUTE DESCRIPTION

TAKEOFF RUNWAY 5: Climbing left turn to 5000 on heading 360° and CKH VORTAC  
R-075 to BLUSH INT/CKH 58 DME.