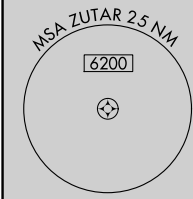
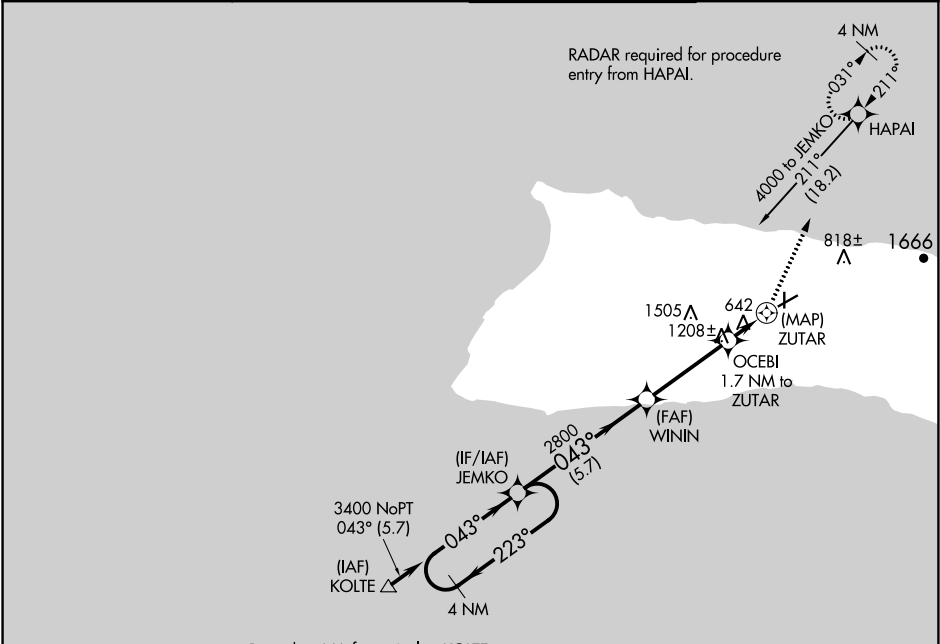


APP CRS	Rwy Idg	N/A
043°	TDZE	N/A
	Apt Elev	454

RNAV (GPS)-B  
MOLOKAI (MKK)(PHMK)

<p><b>⚠</b> DME/DME RNP-0.3 NA. Circling to Rwy 5/17/23 NA at night. Helicopter visibility reduction below 1 SM not authorized.</p>	<p>MISSED APPROACH: Climb to 4000 direct HAPAI and hold, continue climb-in-hold to 4000.</p>
---	--

ATIS 128.2	HCF CENTER 124.1 317.5	MOLOKAI TOWER ★ 125.7 (CTAF) 0 306.2	GND CON 121.9
---------------	---------------------------	---	------------------



Procedure NA for arrival at KOLTE on V2 northwest bound.

4 NM Holding Pattern				
JEMKO				
VGS and descent angles not coincident (VGS Angle 4.00/TCH 49).				
4000 HAPAI				
3400 ← 223° 043° →				
2800				
WININ				
OCEBI 1.7 NM to ZUTAR				
ZUTAR				
5.23° TCH 50				
1700				
5.7 NM 3.6 NM 1.7 NM 0.5				
CATEGORY	A	B	C	D
CIRCLING	1000-1 546 (600-1)	1160-1 706 (800-1)	1680-3 1226 (1300-3)	1940-3 1486 (1500-3)

