

APP CRS	Rwy Idg	6995
204°	TDZE	25
	Apt Elev	53

RNAV (GPS) RWY 20
KAHULUI (OGG)(PHOG)

RNP APCH.

T
A When local altimeter setting not received, procedure NA.

MISSED APPROACH: Climb to 500 then climbing left turn to 4300 direct NDREW and hold.

ATIS 128.6	HCF APPROACH 120.2 322.4 (NORTH) 119.5 225.4 (SOUTH)	MAUI TOWER* 118.7 (CTAF) 0 279.6	GND CON 121.9 279.6	CLNC DEL 120.6 290.5	UNICOM 122.95
---------------	--	-------------------------------------	------------------------	-------------------------	------------------

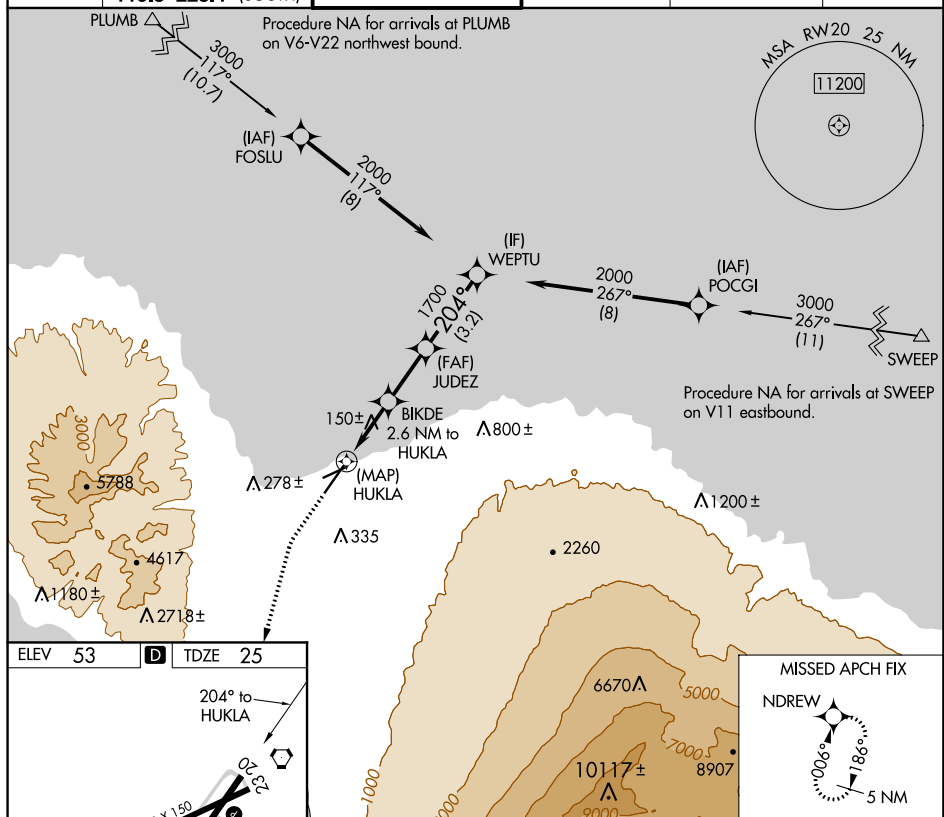


Diagram illustrating the layout of Runway 20 (HUKLA) and Runway 196 (TWR). Runway 20 is shown with a length of 4980 x 150 and a width of 0.8 x 10'. Runway 196 is shown with a length of 6980 x 150. The diagram also indicates the elevation (ELEV 53) and the distance (TDZE 25) from the runway end to the HUKLA. A 204° bearing is marked for the HUKLA. A star symbol marks the TWR 196. A small circle with a dot is shown near the bottom left.

500 ↑	4300 ↖	NDREW ✦	VGSI and descent angles not coincident (VGSI Angle 3.00/TCH 76).			WEPTU
CATEGORY	A		B	C	D	
LNNAV MDA	400-1 375 (400-1)					
C CIRCLING	500-1 447 (500-1)		620-1 567 (600-1)	740-2 687 (700-2)		1140-3 1087 (1100-3)