

APP CRS	Rwy Idg	6500
349°	TDZE	96
	Apt Elev	153

RNAV (GPS) Y RWY 35

LIHUE (LIH)(PHLI)

▼

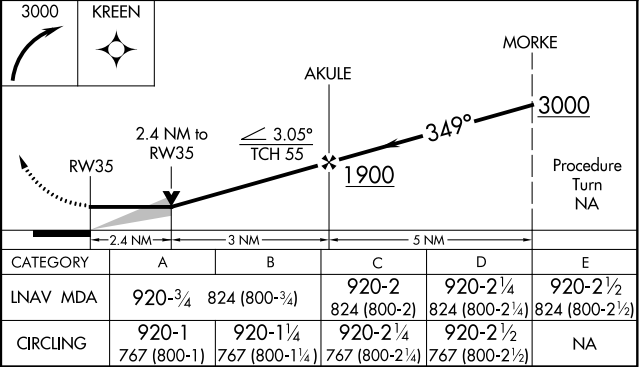
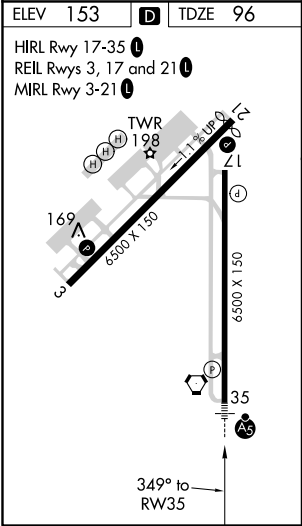
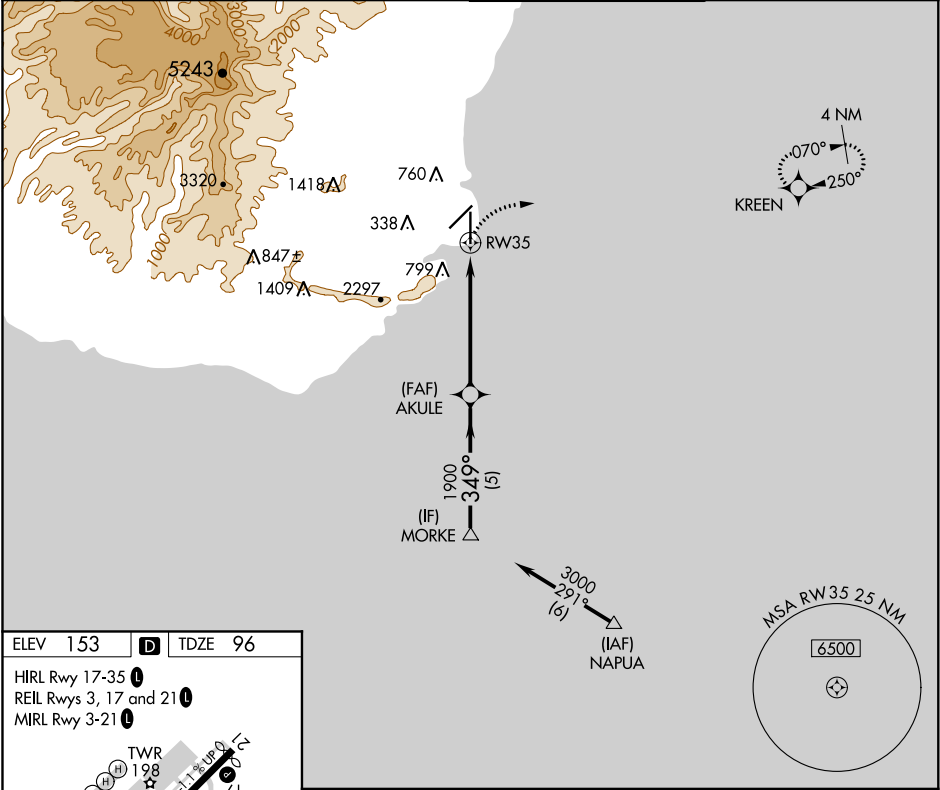
▲

For inoperative MALSR, increase LNAV Cat A visibility to 1 mile and Cat E to 3 miles. Circling NA west of Rwy 17-35. Circling NA at night. DME/DME RNP-0.3 NA.

MALSR

MISSED APPROACH: Climbing right turn to 3000 direct KREEN WP and hold.

ATIS 127.2	HCF CENTER 126.5 269.4	LIHUE TOWER ★ 118.9(CTAF) 263.1	GND CON 121.9
---------------	---------------------------	------------------------------------	------------------



PAC, 05 NOV 2020 to 31 DEC 2020

PAC, 05 NOV 2020 to 31 DEC 2020