

VORTAC LNY 117.7 Chan 124	APP CRS 025°	Rwy Idg TDZE Apt Elev 5000 1307 1308
---	------------------------	--

VOR or TACAN RWY 3
LANAI (LNY)(PHNY)

▽	MISSED APPROACH: Climb to 1720 then climbing left turn to 3300 via heading 240° and LNY VORTAC R-278 to GRAMY INT/LNY 10 DME and hold.
----------	--

AWOS-3P 118.375	HCF CENTER 119.3 307.1	CTAF 122.9 0
---------------------------	----------------------------------	------------------------

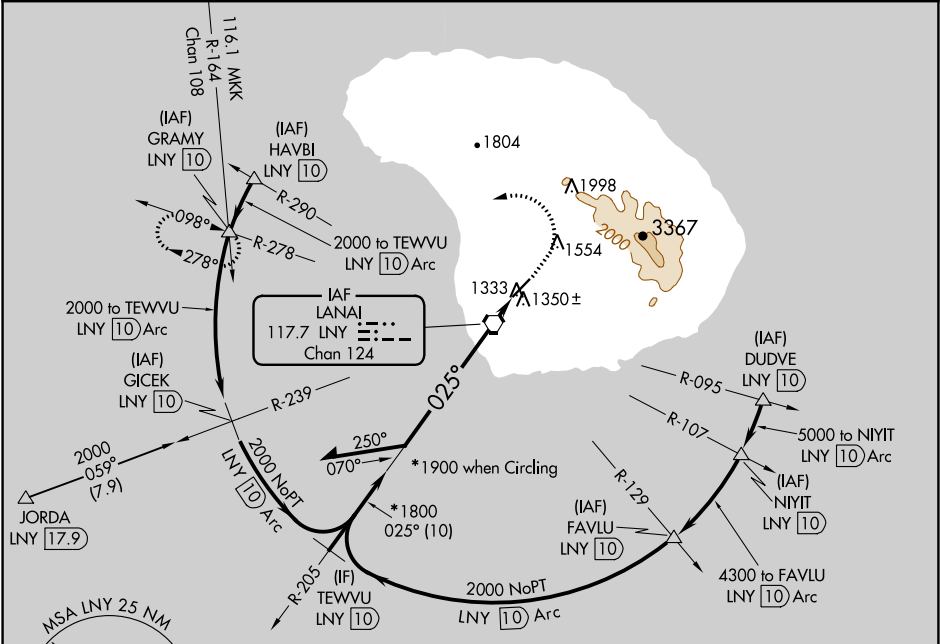


Diagram illustrating the missed approach procedure. The climb is from 1720 to 3300 via heading 240° and LNY VORTAC R-278 to GRAMY. The VGSI and descent angles are not coincident (VGSI Angle 3.00/TCH 49). The diagram shows a 3.55° TCH 47 and a 1.2 NM distance. A note indicates '*1900 when Circling'.

Diagram illustrating the missed approach procedure. The climb is from 1720 to 3300 via heading 240° and LNY VORTAC R-278 to GRAMY. The VGSI and descent angles are not coincident (VGSI Angle 3.00/TCH 49). The diagram shows a 3.55° TCH 47 and a 1.2 NM distance. A note indicates '*1900 when Circling'.

CATEGORY	A	B	C	D
S-3	1660-1	353 (400-1)	1660-1¼	353 (400-1¼)
CIRCLING	1840-1 532 (600-1)	1880-1 572 (600-1)	1900-1½ 592 (600-1½)	1900-2 592 (600-2)

Diagram illustrating the missed approach procedure. The climb is from 1720 to 3300 via heading 240° and LNY VORTAC R-278 to GRAMY. The VGSI and descent angles are not coincident (VGSI Angle 3.00/TCH 49). The diagram shows a 3.55° TCH 47 and a 1.2 NM distance. A note indicates '*1900 when Circling'.