

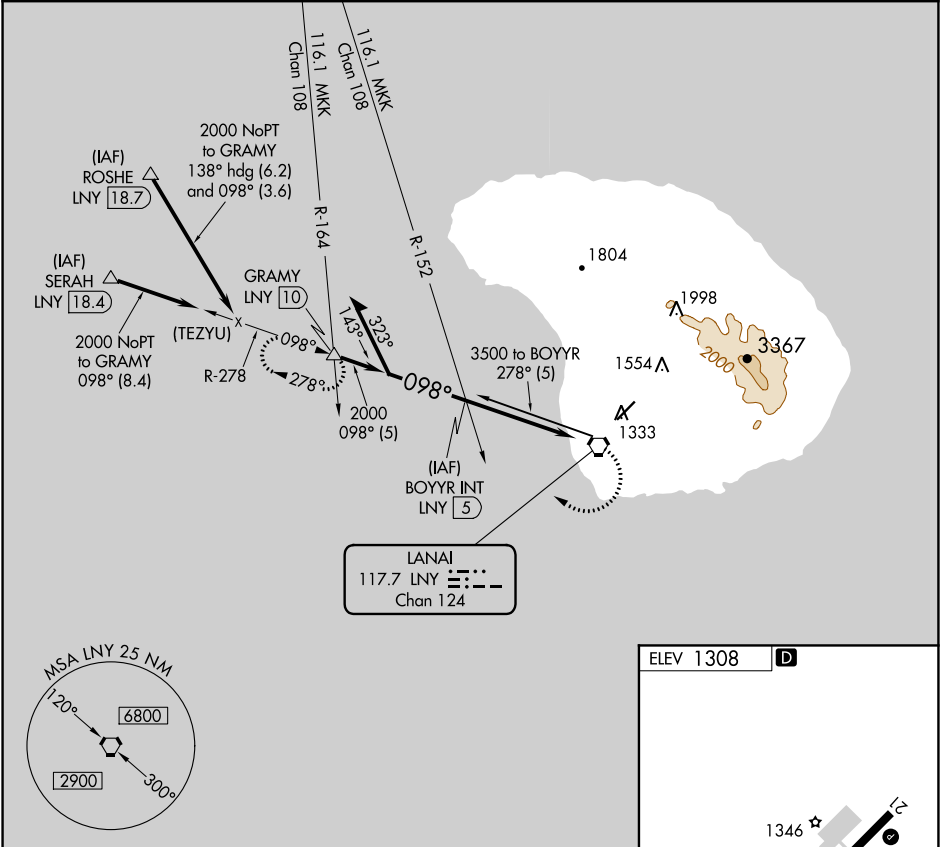
VORTAC LNY 117.7 Chan 124	APP CRS 098°	Rwy Idg TDZE Apt Elev 1308	N/A N/A 1308
---	------------------------	---	---

VOR or TACAN or GPS-A
LANAI (LNY)(PHNY)

⚠ When local altimeter not received, procedure not authorized, except for operators with approved weather reporting service.

MISSED APPROACH: Climbing right turn to 2000 via LNY R-278 to GRAMY INT/LNY 10 DME and hold.

AWOS-3P 118.375	HCF CENTER 119.3 307.1	CTAF 122.9 0
---------------------------	----------------------------------	------------------------



BOYYR INT LNY 5

Remain within 10 NM

2000 278°

2000 098°

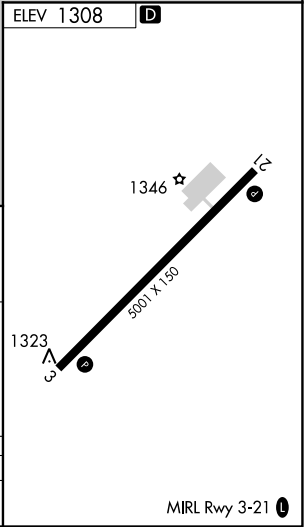
2000

5 NM

LANI VORTAC

2000	GRAMY
LNY R-278	△

CATEGORY	A	B	C	D
CIRCLING	1840-1½ 532 (600-1½)	1880-1½ 572 (600-1½)	1900-1½ 592 (600-1½)	1900-2 592 (600-2)



PAC, 05 NOV 2020 to 31 DEC 2020

PAC, 05 NOV 2020 to 31 DEC 2020