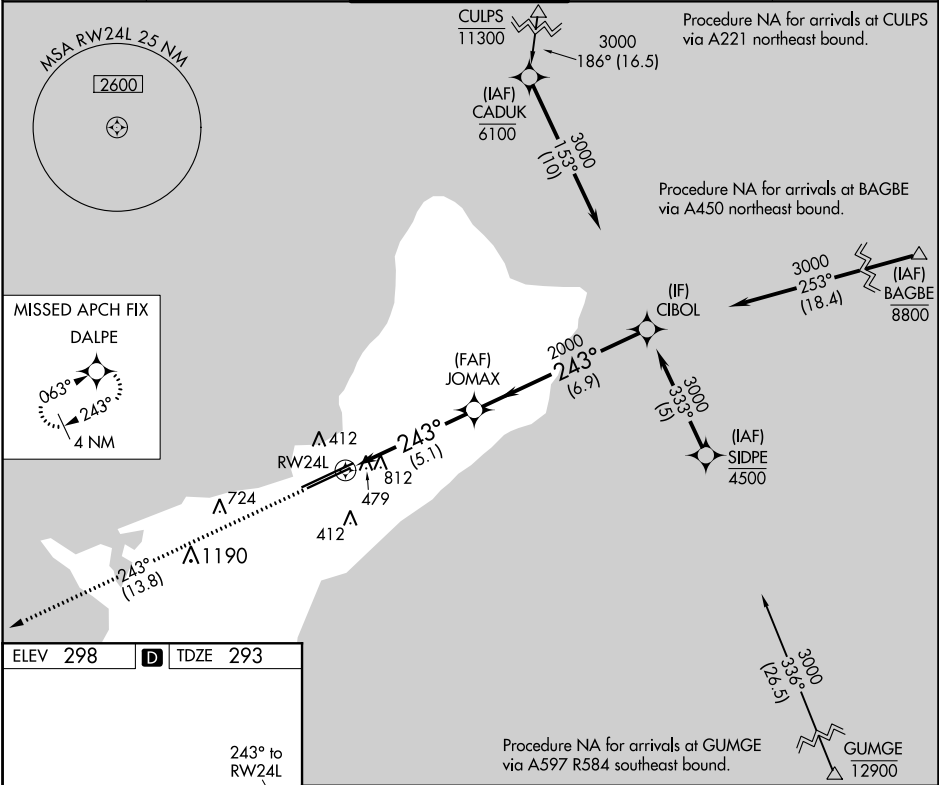


APP CRS	Rwy Idg	9010
243°	TDZE	293
	Apf Elev	298

RNAV (RNP) Z RWY 24L
GUAM INTL (GUM)(PGUM)

	For uncompensated Baro-VNAV systems, procedure NA below 19°C (66°F) or above 48°C (119°F). GPS required. Procedure NA at night.	MISSED APPROACH: Climb to 3000 via track 243° to DALPE and hold.
--	---	--

ATIS 119.0	GUAM CERAP 119.8 269.0	AGANA TOWER 118.1 340.2	GND CON 121.9 336.4	CLNC DEL 121.9
---------------	---------------------------	----------------------------	------------------------	-------------------



		Procedure Turn NA		
3000 tr 243°		CIBOL 3000		
JOMAX 2000		GP 3.00° TCH 55		
5.1 NM		6.9 NM		
CATEGORY	A	B	C	D
RNP 0.20 DA	1103-2 ³ / ₄ 810 (900-2 ³ / ₄)			
RNP 0.30 DA	1140-3 847 (900-3)			
HIRL all Rwy				
AUTHORIZATION REQUIRED				

PAC: 05 NOV 2020 to 31 DEC 2020

PAC: 05 NOV 2020 to 31 DEC 2020