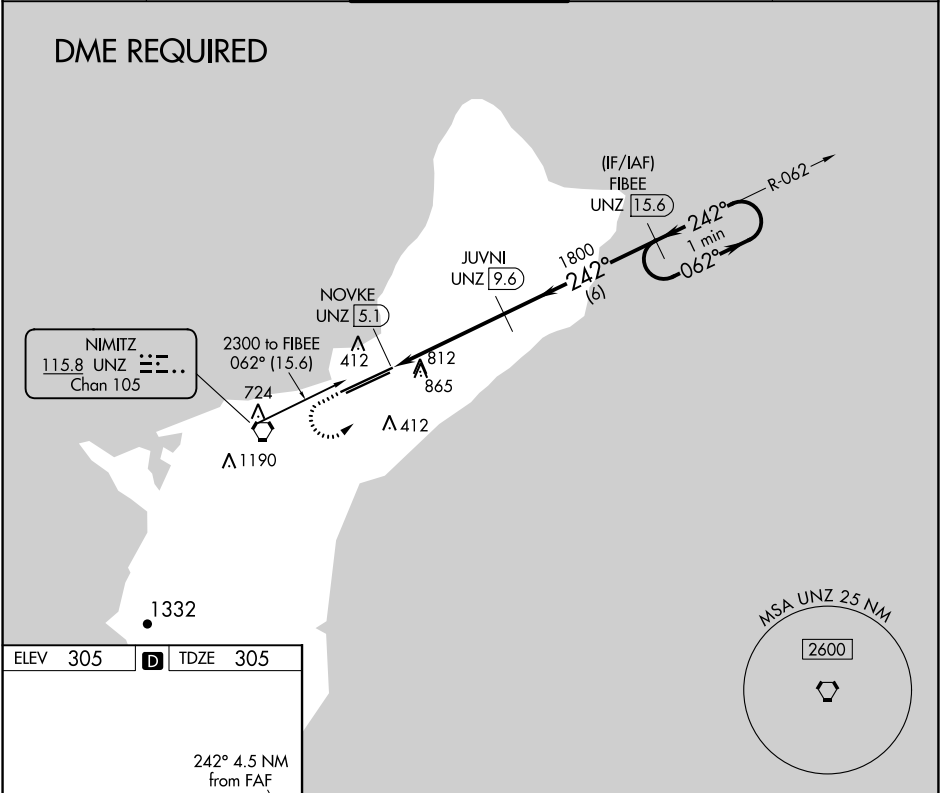


VORTAC UNZ	APP CRS	Rwy Idg	12015
115.8	242°	TDZE	305
Chan 105		Apt Elev	305

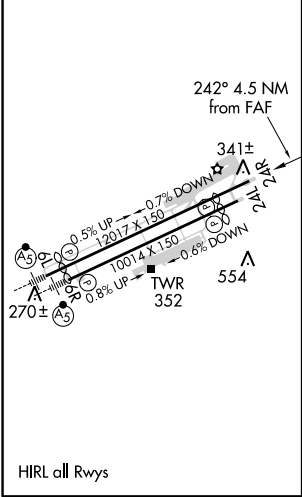
VOR or TACAN RWY 24R
GUAM INTL (GUM)(PGUM)

<p>⚠ Circling NA southeast of Rwy 6R-24L. Rwy 24R helicopter visibility reduction below ¾ SM NA.</p>	<p>MISSED APPROACH: Climb to 2300 then left turn on UNZ VORTAC R-062 to FIBEE/UNZ 15.6 DME and hold.</p>
---	--

ATIS 119.0	GUAM CERAP 119.8 269.0	AGANA TOWER 118.1 340.2	GND CON 121.9 336.4	CLNC DEL 121.9
---------------	---------------------------	----------------------------	------------------------	-------------------



ELEV 305	D	TDZE 305
----------	----------	----------



	2300	FIBEE UNZ 15.6	JUVNI UNZ 9.6	FIBEE UNZ 15.6	One Minute Holding Pattern
	UNZ R-062				
	UNZ VORTAC	NOVKE UNZ 5.1	UNZ 7.6	1800	2300
			3.00° TCH 75		
			2.5 NM	2 NM	6 NM
CATEGORY	A	B	C	D	
S-24R	1180-1 875 (900-1)	1180-1¼ 875 (900-1¼)	1180-2½	875 (900-2½)	
C CIRCLING	1180-1¼ 875 (900-1¼)		1180-2½ 875 (900-2½)	1180-2¾ 875 (900-2¾)	

VOR or TACAN RWY 24R